

WELCOME



Sharon Public School

February 26, 2024

7:00 - 8:30 pm

Bienvenue



Working Together to Build Our Future

Land Acknowledgement

We affirm that we are all treaty people and acknowledge that the York Region District School Board is located on the lands of two treaties. These treaties have been signed with Georgina Island who is our closest neighbour and partner in education.

To honour this agreement we will take up our responsibility to be respectful of their traditions, knowledge and inherent rights as sovereign nations. We will respect their relationship with these lands and recognize that our connection to this land is through the continued relationship with these First Nations, and we acknowledge our shared responsibility to respect and care for the land and waters for future generations.

Working Together to Build Our Future



Agenda

- ▶ Welcome and Introductions of Board Staff
 - Superintendent: Farooq Shabbar
- ▶ Greetings from:
 - Trustee: Carolyn Butterworth
- ▶ New Principal: Sarah Anderson
- ▶ New School Information
- ▶ Questions and Answers



Working Together to Build Our Future

Introductions of YRDSB Staff

- ▶ Farooq Shabbar – Superintendent of Schools
- ▶ Carolyn Butterworth – Trustee
- ▶ Gerard Parris, Antonella Di Padre, Robert Selvazzo, Derek Petri – Plant Services
- ▶ Dawn Adams, Kathryn Shaw-Edmond – Planning
- ▶ Sandra Sanz – Childcare, Before and After Care
- ▶ Reena Mistry – Active Schools



Working Together to Build Our Future

Greetings from our Trustee

Carolyn Butterworth

Working Together to Build Our Future



Naming our School

- ▶ The new Sharon PS on Murrell Blvd is being built as a replacement for the current Sharon PS on Leslie Street
- ▶ Therefore, we will retain the name of Sharon PS



Working Together to Build Our Future

Principal, Sarah Anderson

sarah.anderson@yrdsb.ca

- ▶ Lived in York Region for my whole life
- ▶ Worked for YRDSB for over 20 years
- ▶ School Administrator since 2015
- ▶ Principal
 - Glen Shields Public School
- ▶ Vice Principal
 - Oscar Peterson Public School
 - Jersey Public School



Working Together to Build Our Future



Words that guide me

- ▶ Family
- ▶ Balance



Working Together to Build Our Future



I believe....

We should be lifting each other up and cheering each other on, not trying to outshine one another. The sky would be awfully dark with just one star.



Working Together to Build Our Future



Board Priorities



- ▶ Well-Being and Mental Health
- ▶ Equity and Inclusivity
- ▶ Effective Instruction and Assessment
- ▶ Collaborative Relationships
- ▶ Ethical Leadership

Working Together to Build Our Future



Educational Philosophy

- ▶ Schools are welcoming and inclusive learning environments where all students, staff and families know that they matter, belong and are respected and valued
- ▶ Students see their lives and others' represented in the materials, books, pictures, and in common spaces
- ▶ Modern education requires balance between learning the fundamentals and building the necessary skill set for success in our digital world
- ▶ While a school's primary focus is education, we also support our students by collaborating with other YRDSB partners to develop and maintain social skills, mental health and well-being to improve overall student success
- ▶ An essential component of education is learning from our mistakes

Working Together to Build Our Future



Our Beautiful New School!

- ▶ Classrooms on both floors
- ▶ Art and Science Rooms
- ▶ Music Room
- ▶ Special Education Classroom
- ▶ Double Gym
- ▶ Learning Commons (Library)
- ▶ Childcare



Working Together to Build Our Future



Enrolment

- ▶ **Mainstream Classes:** Year 1 (JK) to Grade 8
- ▶ **2 Community Classes:**
 - **Junior/Intermediate ASD class**
 - **Junior/Intermediate MID class**
- ▶ **Projected Opening Enrolment:** **560** students
- ▶ **Ministry Rated Capacity:** **638** students



Working Together to Build Our Future

School Day



► Start & End Times: 9:10 am - 3:40 pm

- **Block 1** 9:10 - 10:50 (100 minutes)
- **Recess** 10:50 - 11:20 (30 minutes)
- **Block 2** 11:20 - 1:00 (100 minutes)
- **Lunch** 1:00 - 2:00 (60 minutes)
- **Block 3** 2:00 - 3:40 (100 minutes)

- Specific information about entry routines, recess and lunch times will be available later in the Spring.



Working Together to Build Our Future

SPS School Council

- ▶ Opportunity for families to have input on our school, school-wide activities and fundraising initiatives
- ▶ You will be able to declare your interest in being part of School Council in September 2024
- ▶ Looking forward to having the input of our whole school community



Working Together to Build Our Future

School Lunch Assistants

- ▶ Paid part-time job opportunity during lunch hour (1:00 - 2:00 pm)
- ▶ Forward your name for consideration via email to: sarah.anderson@yrdsb.ca
- ▶ School staff will contact you in August



Working Together to Build Our Future

Registration process & timelines

- ▶ Holding Schools are **Meadowbrook PS, Glen Cedar PS and Denne PS**
- ▶ Students currently attending holding schools are automatically transferred and **do not need to register**
- ▶ From now until June 28, 2024, new students to our area will continue to register at their designated holding school
- ▶ Elementary schools are closed during July and August. Please contact the Community Education Centre North to set up a registration appointment
- ▶ Please visit the Board's registration webpage <https://www2.yrdsb.ca/schools-programs/school-registrationDocuments> regarding documentation required for registration



Working Together to Build Our Future

Grade 7s at Holding Schools

- ▶ **Only** students in **Gr. 7** have the **choice** to remain at their current (holding) school or to transfer to our school for Gr. 8.
- ▶ Gr. 7s who remain at their current (holding) school will have transportation continue for that one year.
- ▶ **All other students currently attending one of our holding schools are expected to attend Sharon PS (Murrell Blvd) in September 2024.**



Working Together to Build Our Future

Discover Kindergarten



Please join us for an opportunity to learn more about our Kindergarten Program. **Please bring your children.**

- ▶ **Date:** Tuesday, May 21st, 2024
Session 1: 4:00 - 5:00pm
Session 2: 5:00 - 6:00pm
- ▶ **Location:** Sharon P.S. - Leslie St.



Working Together to Build Our Future

Student Transportation Services (STS)

- ▶ Joint venture between the Catholic and Public school boards in York Region.
- ▶ Mandate to provide safe, efficient and on time school bus transportation.
- ▶ Transportation Officers design and manage bus routes based on Board approved criteria as set out in policy #680.



Working Together to Build Our Future



Student Transportation Services (STS)

- ▶ Eligible for Transportation:
 - Kindergarten to Grade 3 - greater than 1.2 kilometres from school
 - Grades 4 to 8 - greater than 1.6 kilometres from school
 - Access information on the STS website www.schoolbuscity.com after August 1



Working Together to Build Our Future



Active School Travel

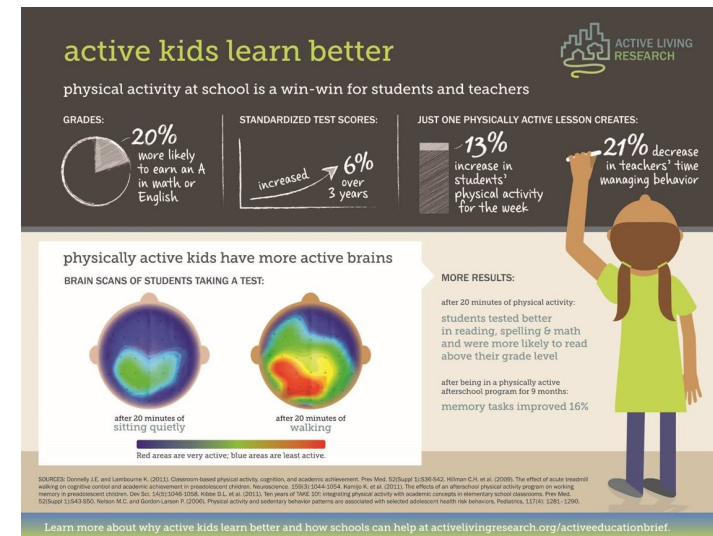
- ▶ All families are encouraged to use active school travel to travel to and from school!
- ▶ Active school travel is any form of human-powered and sustainable mode of travel for the trip to/from school and includes:
 - **walking**
 - **wheeling** (including cycling, rollerblading, skateboarding, wheelchair)
 - **taking the school bus** (if eligible)
- ▶ Community partners **collaborate** to develop a **school travel plan (STP)**



Working Together to Build Our Future

Benefits of Active School Travel

- ▶ Physical health
- ▶ Mental health and well-being
- ▶ Reduces traffic in the area
- ▶ Keeps **pedestrians** safe
- ▶ Sense of Community
- ▶ Increased social interaction
- ▶ Good for the environment
- ▶ Contributes to academic/school success



Working Together to Build Our Future



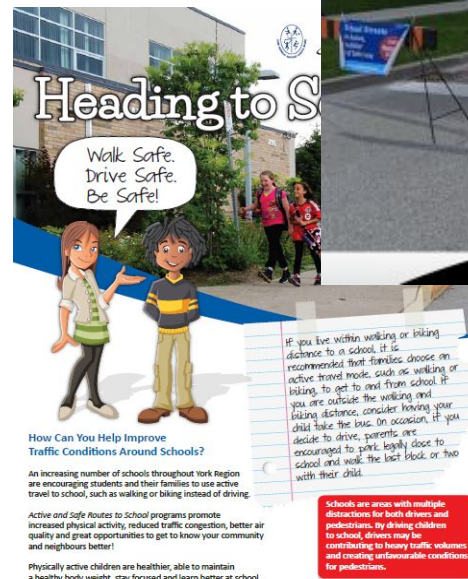


Working Together to Build Our Future



Resources and Events

- ▶ Walking Maps
 - ▶ Pedestrian Safety
 - ▶ Pick-up and Drop-off Tips
 - ▶ Walk to School Events
 - ▶ Bike to school events
- MORE!**



Program Information

YRDSB Active School Travel
www.saferoutestoschool.ca
www.york.ca/healthyschools

Working Together to Build Our Future



Child Care / Before & After School Programs

- ▶ The York Region District School Board is pleased to announce that our school will have both a full day child care centre and a Before and After Care Program.
- ▶ Child care centres are programs that offer care to children 18 months to 3.8 years (toddler and preschool).
- ▶ Before and After School Care Programs (B/A programs) are programs for children ages 4-12 years.
- ▶ Hours of operation start as early as 7:00 a.m. until 6:30 p.m. at the latest.



Working Together to Build Our Future

Child Care / Before & After School Programs

- ▶ Child Care and Before and After Care are provided by Child Care Agencies licensed under the ***Child Care and Early Years Act, 2014*** that are pre-approved to provide programs in YRDSB schools.
- ▶ A selection process was held and a child care operator has been selected to operate the childcare centre and offer before and after care.



Working Together to Build Our Future

Child Care offered by

Ginger Hills Child Care

(previously named Gwillimbury Hills Child Care)



Working Together to Build Our Future

Communication

- ▶ Edsby (*Communication & Attendance*)



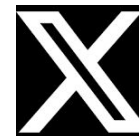
- ▶ E-mail



- ▶ School & Board Websites



- ▶ Social Media: Instagram and/or X



Working Together to Build Our Future



Closing Thoughts

- ▶ Honoured and excited to serve as the Principal of our new school.
- ▶ Looking forward to partnering with you and getting to know each of you and your children.
- ▶ Together, we will create a **safe, welcoming, inclusive** and amazing school!



Working Together to Build Our Future



Questions FAQs



Working Together to Build Our Future



What if the new school is not ready to open in September?

- ▶ The school is currently on Schedule for a September 2024 opening
- ▶ In the event of a delayed opening, families will receive further information on the contingency plan
- ▶ If the school opening is delayed, we will move in as soon as the school is ready



Working Together to Build Our Future

What if there are more students registered than the new school can hold?

- ▶ Current projections and registrations can be accommodated in the school
- ▶ In the event we have more registrations than currently anticipated, there is flexibility in the school organization to accommodate more students
- ▶ Generally speaking, schools in new developments will require portables. Sharon Public School will most likely require portables at some point to address enrolment needs



Working Together to Build Our Future

How will students be placed in classes at the new school?

- ▶ Meetings are already booked with Administrators from each holding school to discuss class placements for the new school
- ▶ Each class will be created with students from each of our four schools
- ▶ You can email class placement requests to sarah.anderson@yrdsb.ca



Working Together to Build Our Future

Other questions??

- ▶ Please email **sharon.ps@yrdsb.ca** with your questions
- ▶ **Subject line:** New School Question
- ▶ We will endeavour to respond within 3 business days



Working Together to Build Our Future



NORTHEAST STREET VIEW



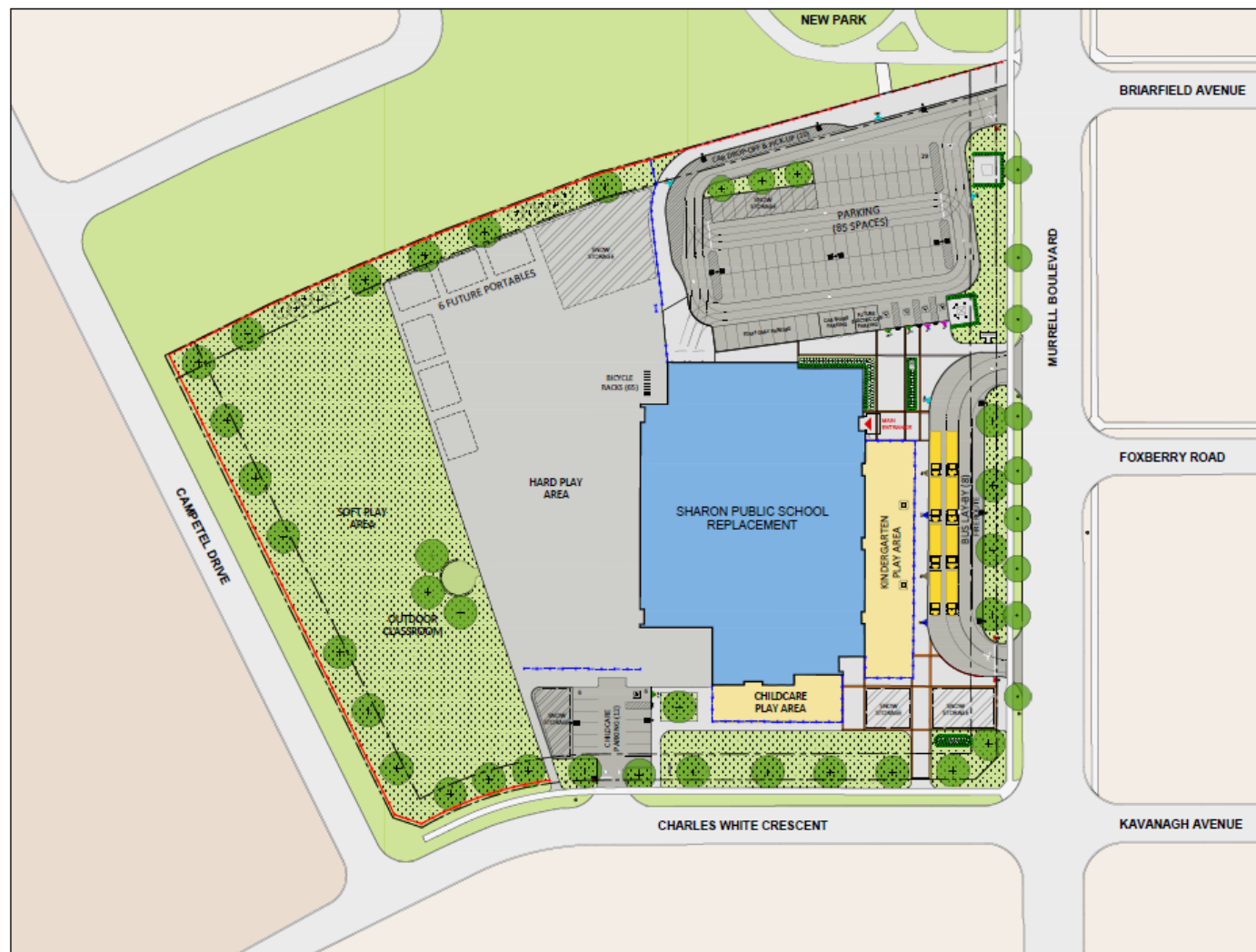
SHARON PUBLIC SCHOOL REPLACEMENT

PERSPECTIVE VIEW

Cellucci+Pace
ARCHITECTURE | PLANNING | PROJECT MANAGEMENT

Working Together to Build Our Future





SHARON PUBLIC SCHOOL REPLACEMENT

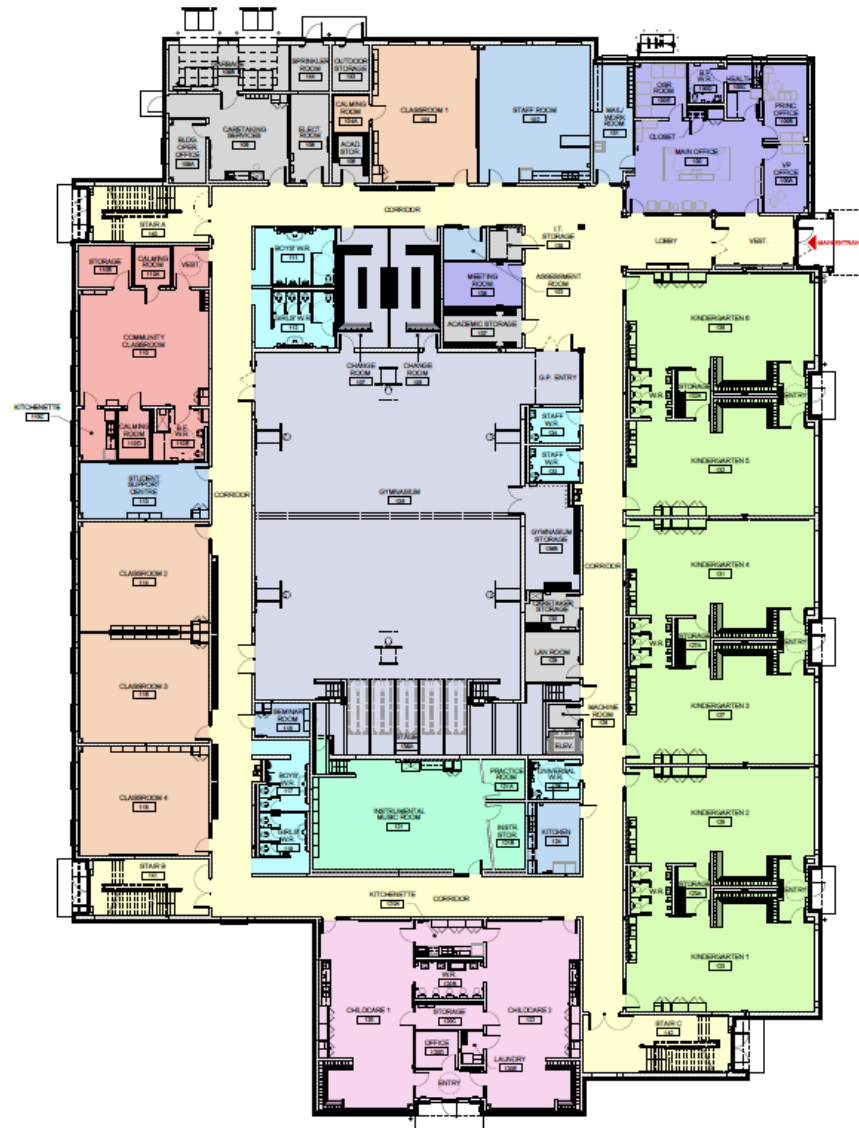
SITE PLAN



Cellucci+Pace
ARCHITECTURE/PLANNING/PROJECT MANAGEMENT

Working Together to Build Our Future





SHARON PUBLIC SCHOOL REPLACEMENT

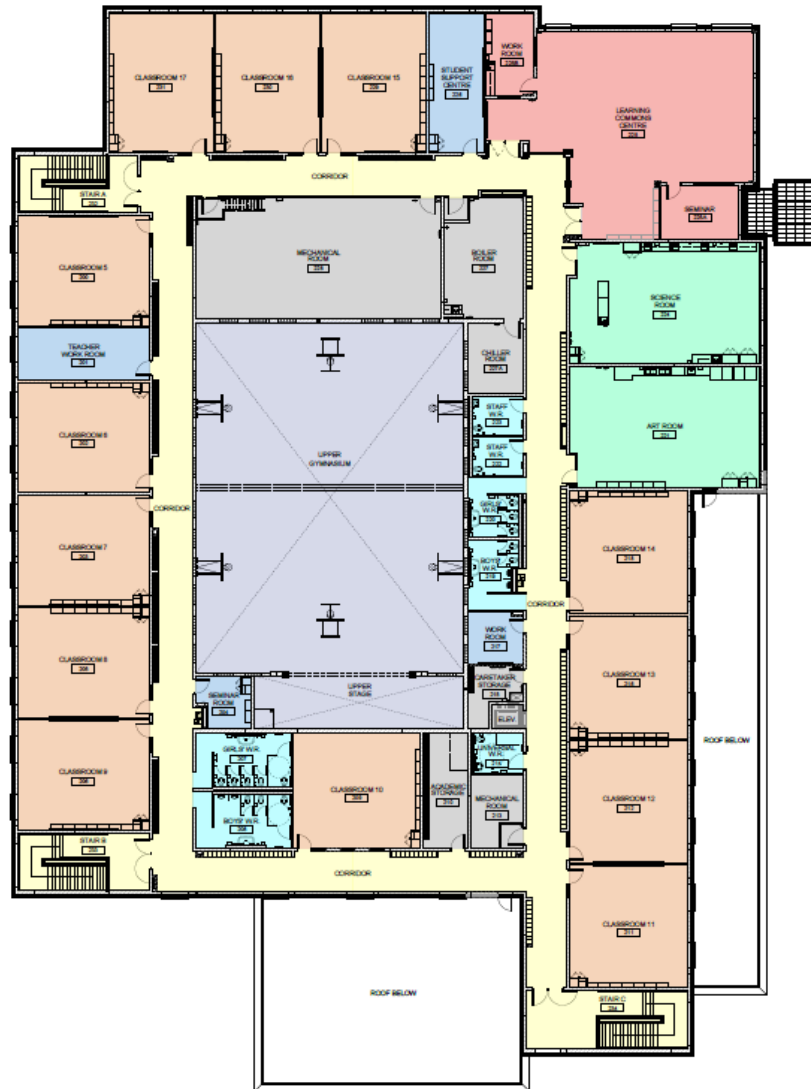
GROUND FLOOR PLAN



Cellucci+Pace
ARCHITECTURE | PLANNING | PROJECT MANAGEMENT

Working Together to Build Our Future





SHARON PUBLIC SCHOOL REPLACEMENT

SECOND FLOOR PLAN



Cellucci+Pace
ARCHITECTURE | PLANNING | PROJECT MANAGEMENT

Working Together to Build Our Future





SHARON PUBLIC SCHOOL REPLACEMENT

BUILDING ELEVATIONS



Cellucci+Pace
ARCHITECTURE + PLANNING + PROJECT MANAGEMENT

Working Together to Build Our Future

