



Dr. Bette Stephenson SS Proposed New Boundary

February 2026

Inspire Learning!

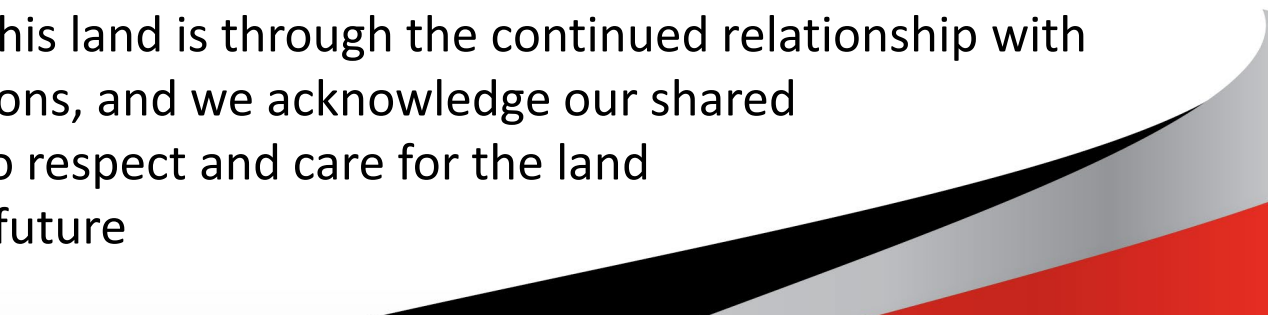
Land Acknowledgement

We affirm that we are all [treaty people](#) and acknowledge that the York Region District School Board is located on the lands of two treaties.


These treaties have been signed with the [Mississaugas of the Credit First Nation](#) and the [First Nations of the Williams Treaties](#) who are: the Mississaugas of Alderville, Curve Lake, Hiawatha, Scugog Island; and the Chippewas of Beausoleil, Rama, and Georgina Island who is our closest neighbour and partner in education.

To honour this agreement we will take up our responsibility to be respectful of their traditions, knowledge and inherent rights as sovereign nations.

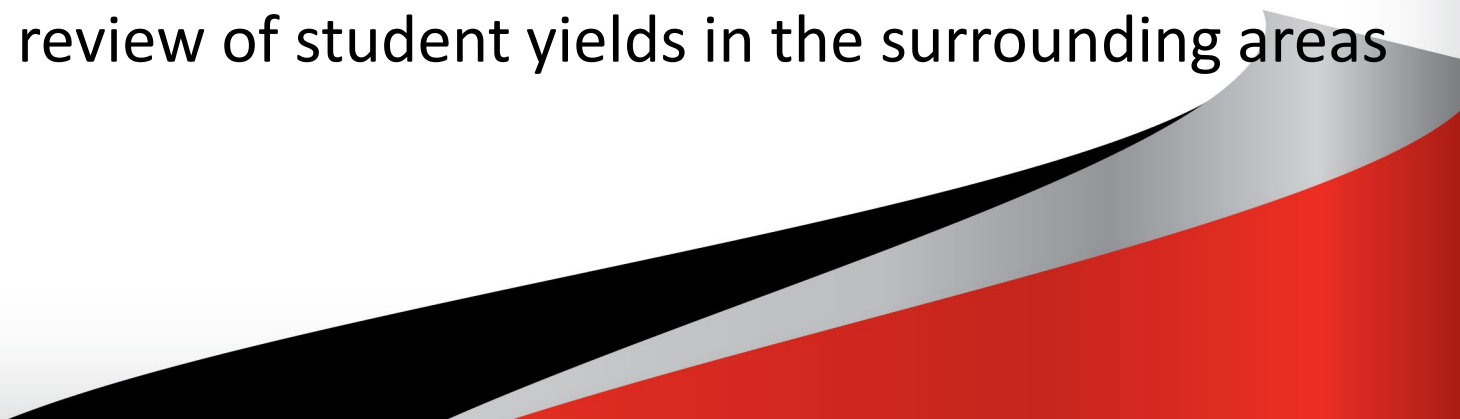
We will respect their relationship with these lands and recognize that our connection to this land is through the continued relationship with these First Nations, and we acknowledge our shared responsibility to respect and care for the land and waters for future generations.



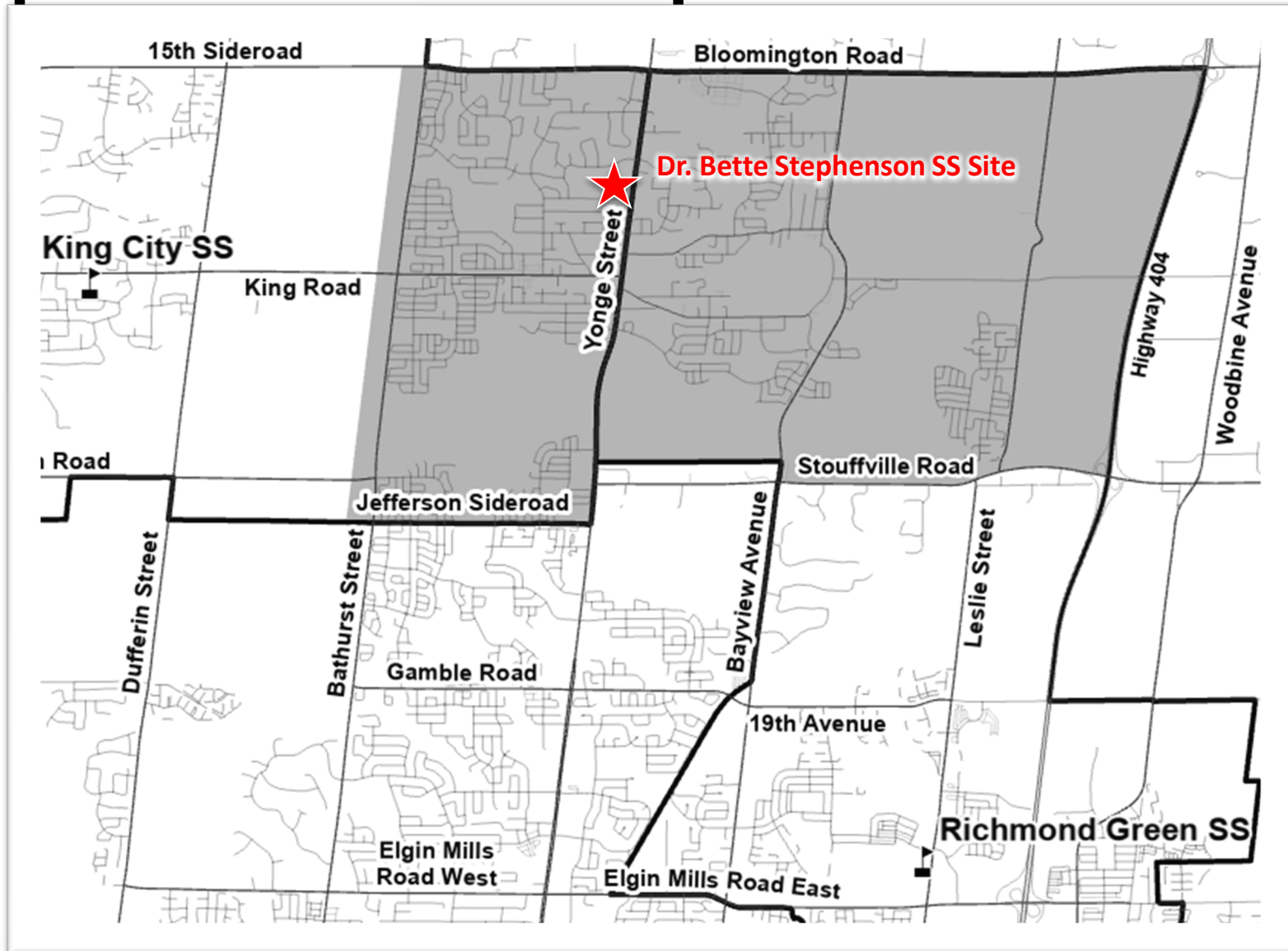
Background

- The Dr. Bette Stephenson Centre for Learning opened in 2011 and has been providing continuing education to adults. It is located at 36 Regatta Avenue in Richmond Hill.
 - The Board received funding approval in 2021 to convert the Dr. Bette Stephenson Centre for Learning into a full secondary school to serve the Richmond Hill community.
- 

Establishing a New School Boundary

- Boundaries are created to ensure the long-term sustainable enrolment of a school
 - Can follow major features such as:
 - roads, railways (Hard dividers)
 - rivers, green spaces, woodlots, etc. (Natural dividers)
 - land parcels
 - Support active school travel (York Region Transit)
 - Incorporate future residential development
 - Based on a review of student yields in the surrounding areas
- 

Proposed Dr. Bette Stephenson SS Boundary

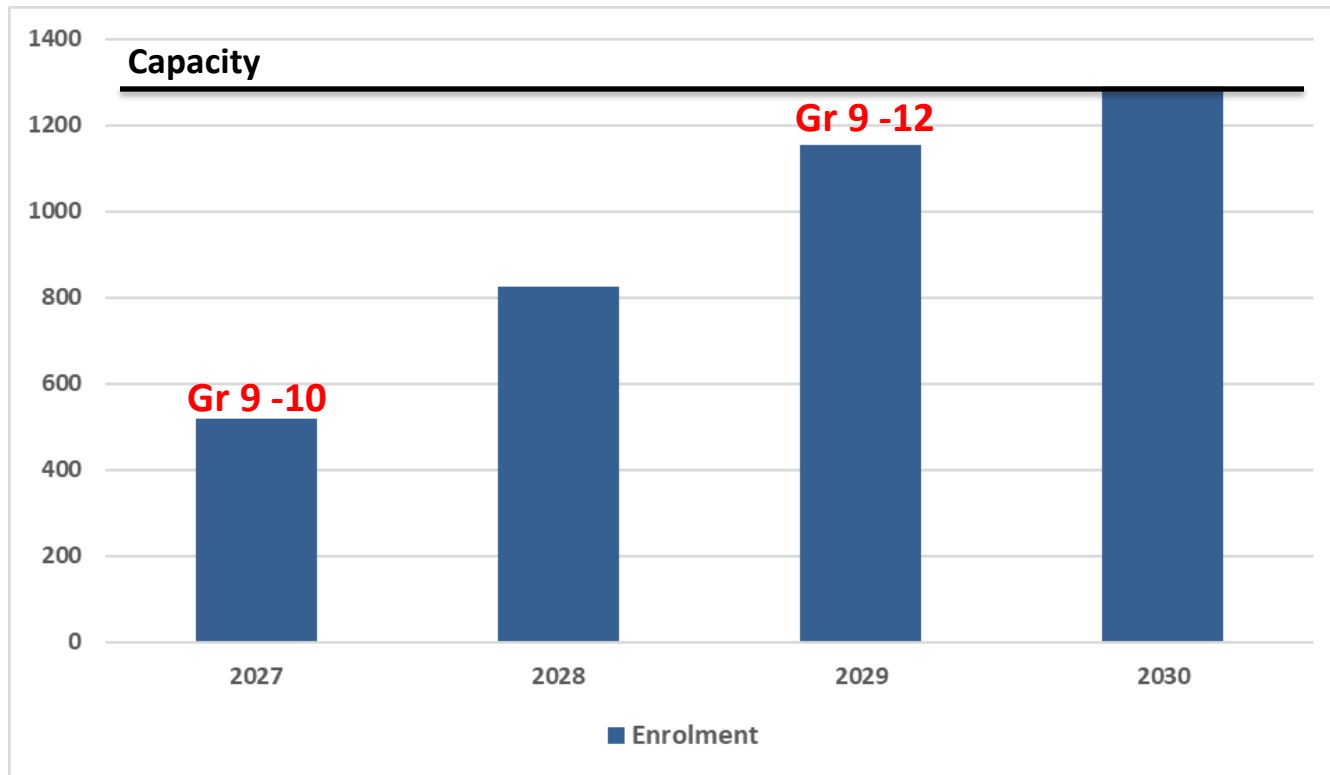


Regular track elementary feeders include Bond Lake PS, Kettle Lakes PS, Lake Wilcox PS, Oak Ridges PS, and MacLeod's Landing PS


Dr. Bette Stephenson Secondary School

- The new Dr. Bette Stephenson Secondary School is scheduled to open September 2027.
 - Offer regular track programming for grades 9 to 10 in first year and grow a grade each year
 - Offer grades 9 to 12 for the 2029-30 school year
 - Building capacity of 1,250
 - Located at 36 Regatta Avenue in Richmond Hill
 - Principal to be appointed in fall 2026
 - School bell times established spring 2027
 - New School opening meeting early 2027
- 

Proposed Dr. Bette Stephenson SS Projection



Timing and Students Impacted

- Boundary change effective September 2027
 - Regular track elementary feeders include Bond Lake PS, Kettle Lakes PS, Lake Wilcox PS, Oak Ridges PS, and MacLeod's Landing PS
 - Grade 7 students (2025-26 school year) who live in the boundary for the new Dr. Bette Stephenson SS and planning to attend grade 9 regular track for September 2027
 - Grade 8 students (2025-26 school year) who live in the boundary for the new Dr. Bette Stephenson SS and attending King City SS, Richmond Green SS, or Dr. G.W. Williams SS (from Holding Area) for grade 9 will move to Dr. Bette Stephenson SS for grade 10 September 2027
- 

Student Transfers

- Transfers are outlined in [Board Policy 108, Student Accommodations](#)
- Schools open/closed to transfers from students who reside outside the attendance area are reviewed on an annual basis and are listed on the Board's [Secondary Schools Open/Closed to Transfers](#) webpage

2026–2027 School Year

A. The following schools will not be accepting new student transfer requests for the 2026–2027 school year:

Area	Schools Closed to New Transfers
CEC Central	Aurora High School (French Immersion only), Bayview Secondary School, Dr. G.W. Williams Secondary School, Richmond Hill High School
CEC East	Bill Hogarth Secondary School (Regular Track only), Bur Oak Secondary School, Markville Secondary School, Milliken Mills High School, Pierre Elliott Trudeau High School, Unionville High School
CEC North	Newmarket HS
CEC West	Hodan Nalayah Secondary School (French Immersion only), Stephen Lewis Secondary School, Tommy Douglas Secondary School (for grades 10, 11 and 12)

Transportation (Policy 680)

➤ Transit Served Students

- A pupil of the Board who has access to public transit to travel to and/or from school
 - lives within 1.2 km from a public transit stop as measured by STS;
 - regularly spends 75 minutes or less traveling to or from school; and
 - requires no more than three vehicle transfers traveling to or from school.


➤ School bus transportation eligibility is reviewed annually as York Region Transit (YRT) adjusts and enhances service

➤ If eligible for Board-provided transportation, Student Transportation Service routes are available August 2027

schoolbuscity.com > Find Your Bus Stop



Proposed Timelines

- School Councils: February 2026
 - Public Meeting: February 25, 2026
 - Learning Equity & Well Being Standing Committee (LEWSC): May 19, 2026 (Delegation Opportunity)
 - Board Meeting: June 16, 2026
 - Secondary School Course Selection & Staffing Process: Oct 2026 to May 2027
 - Implementation: September 2027
- 

1

<https://www2.yrdsb.ca/>

2

2

Board Plans

3

Boundary Information and Presentations

4

Click on the “+” to Expand List for the 2025-2026 Presentations

5

Find Dr. Bette Stephenson SS



Q Hi, what are we looking for today?

I'd like to...

English

About Us

Board Plans

Schools & Programs

Student Support

Community

Home > School Boundary Information And Presentations > School Boundary Information And Presentations

3

School Boundary Information and Presentations

[View](#) [Edit](#) [Latest version](#) [Revisions](#)

School Boundaries

School attendance areas or boundaries are necessary to create school communities that are appropriately sized for the capacity of each school facility and to accommodate sustainable student enrolment. York Region schools offer a variety of school programs and school boundaries are selected to accommodate a school's long-term projected enrolment. Portable accommodation is used during a community's peak enrolment period or to accommodate students awaiting new schools or additions.

Recent Public Meetings

School Boundary and Community Presentations

2025 - 2026 School Boundary and Community Presentations

+

2024 - 2025 School Boundary and Community Presentations

+

4

<https://www2.yrdsb.ca/board-plans/school-boundary-information-and-presentations>

ANY
QUESTIONS
?

Or email: planning.services@yrdsb.ca