



# **George Street PS & Aurora Senior PS Accommodation**

## **School Community Meeting**

November 25, 2013

# Introductions

---

Peter Adams-Luchowski	Trustee
Margaret Roberts	Assoc. Director of Education
Gayle Brocklebank-Vincent	Superintendent of Schools
Jodi Sepkowski	Principal, George Street PS and Aurora Senior PS
Claudia Fischer	Vice Principal, George Street PS, Aurora Senior PS, and Kettle Lakes PS
Plant Staff	Jerry Stoangi
Planning Staff	Jane Ross
	Trina Sprayson
	Sonja Meehan
	Sonia Sanita

# Agenda

---

- Background
- George Street PS
  - Enrolment
  - Full Day Kindergarten Implementation
- Aurora Senior PS
  - Enrolment
- Future Options
  - Renovation Proposal
- Next Steps
- Questions and Feedback

[www.yrdsb.ca](http://www.yrdsb.ca)

# Schools > Find a School > Boundaries

[Careers](#) | [Newsroom](#) | [Contact Us](#) | [Feedback](#) | [BWW L](#)

Google™ Custom Search

Search



OUR MISSION

We Unite in Our Purpose to Inspire and Prepare Learners for Life in Our Changing World Community.

Google™ Translate

Home

About Us

Board of Trustees

Schools

Programs & Initiatives

Students

Parents

Community

Find a School

School Locator

New Schools

School Profiles

School Year Calendar

Boundaries

Registration

Maps to our Schools

Enrolment

Schools at a Glance

Child Care and Early Years

Student Transportation

School Permits

School Councils

Read the *Director's Blog*

From the desk of Ken Thurston, Director of Education



@yrdsb

& Events



National Community Safety and Crime Prevention Month  
November, 2013



Holocaust Education week  
November 3-10, 2013



[Media Literacy Week November 4-8, 2013](#)  
November 3-10, 2013



National Housing Day November 22, 2013





**OUR MISSION**

We Unite in Our Purpose to Inspire and Prepare Learners for Life in Our Changing World Community.

Google™ Custom Search

Search

Google™ Translate

Planning & Property Development Services Home

Elementary Boundaries

Secondary Boundaries

Boundary Review Process & Presentations

School Profiles

Capital Priorities Listing

Active and Safe Routes to School

Archived Boundary Changes

New Schools

Future Schools

Education Development Charges

Education Development Charges By-Law

## Boundary Review Process & Presentations

2013/14

School/Boundary	Presentation	Meeting Date(s)	Board Approved
Nellie McClung PS/Anne Frank PS/ Unnamed Block 11 South	<a href="#">Public Meeting</a>	November 12, 2013, 7pm at Nellie McClung PS	
Ventura Park PS FI Julliard PS New Block 18 #2 FI School	<a href="#">Community Meeting</a> <a href="#">Community Meeting</a>	May 28, 2013, 7pm at Ventura Park PS June 10, 2013, 7pm at Julliard PS Public Meeting December 4, 2013, 7pm at Ventura Park PS	
Dr. Roberta Bondar PS Unnamed Block 18 North	<a href="#">Community Meeting</a>	May 22, 2013, 6:30pm at Dr. Roberta Bondar PS	
Emily Carr SS Tommy Douglas SS (opening Sept. 2014)	<a href="#">School Council</a>	May 27, 2013, 7pm at Pierre Berton PS June 3, 2013, 7pm at Pierre Berton PS	<a href="#">June 4, 2013</a>

### Other School Accommodation Information

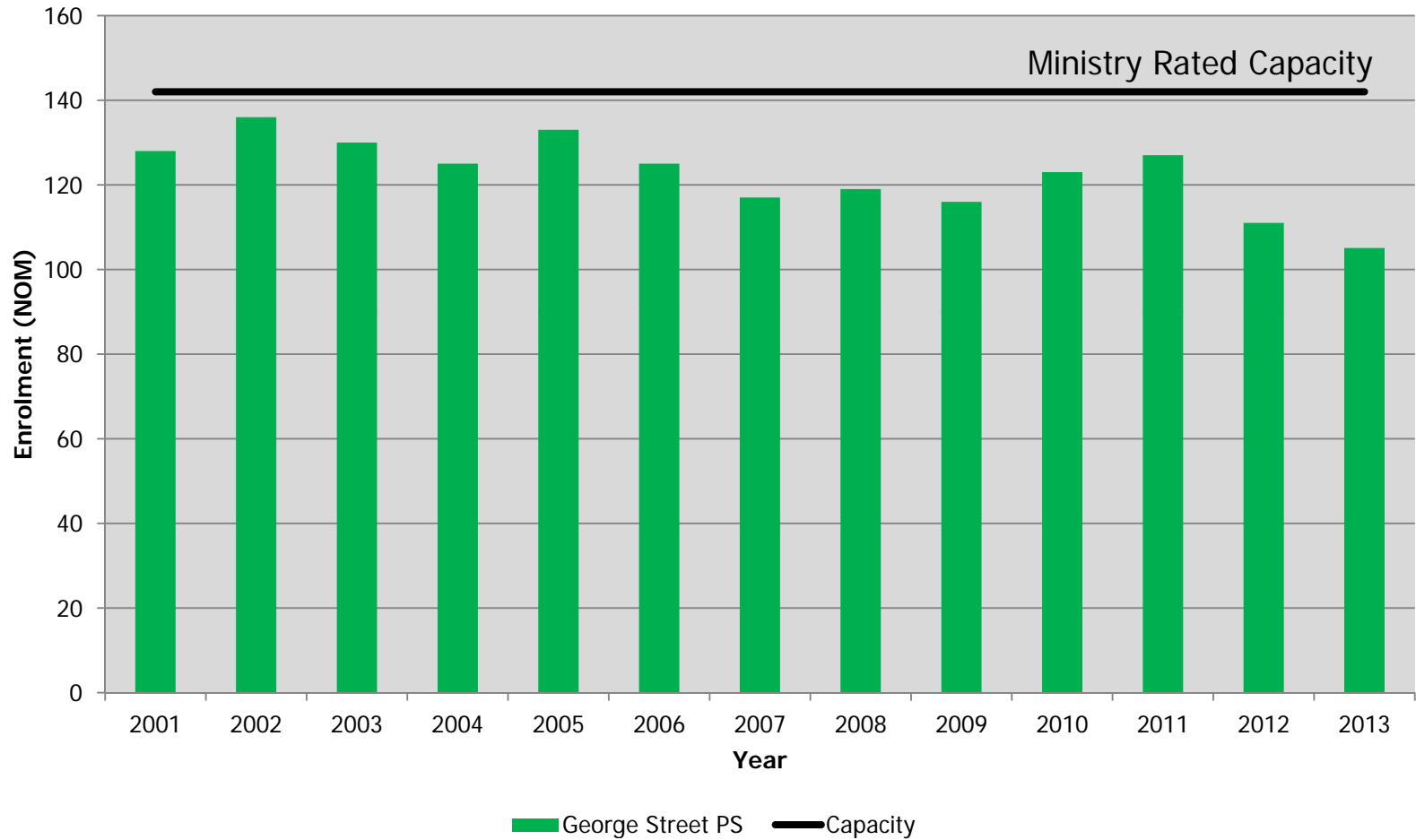
School/Boundary	Presentation	Meeting Date(s)	Board Approved
Glad Park PS FI Program Summitview PS	<a href="#">School Council</a> <a href="#">School Council</a>	November 4, 2013	n/a
Franklin St. PS FI Program Reesor Park PS	<a href="#">School Council</a> <a href="#">School Council</a>	November 18, 2013	n/a

## Background

---

- George Street PS (JK-3) and Aurora Senior PS (grades 4-8) have served students in one attendance boundary with this grade structure for a number of years
- Full day kindergarten implementation is scheduled for September 2014 at George Street PS
- Before proceeding with expenditure and construction, impact of long-term student accommodation should be assessed

# Historical Enrolment for George Street PS



## JK Intake vs. Regular Track Grade 8's

---

Year	JK	Grade 8
2013	21	36
2012	24	43
2011	26	32

- There are large cohorts of senior grades that are being replaced by smaller incoming JK students
- Grade 1 students leaving for FI has been steady at 7 students in the past 3 years



## Student Projections

---

- No new major residential development in the school boundary
- The west side of Aurora has an overall declining regular track student population
- Staff do not project growth for regular track enrolment at George Street PS/Aurora Senior PS
- Solutions have been put in place for FI for Aurora West

## Challenges

---

- Low enrolment at George Street PS creates staffing challenges
- Difficult to organize classes with so few students
- 4 out of 5 classes are over Primary class size caps
- This avoids a triple split class
- Shared Principal (2 schools) and Vice-Principal (3 schools)

## Full Day Kindergarten

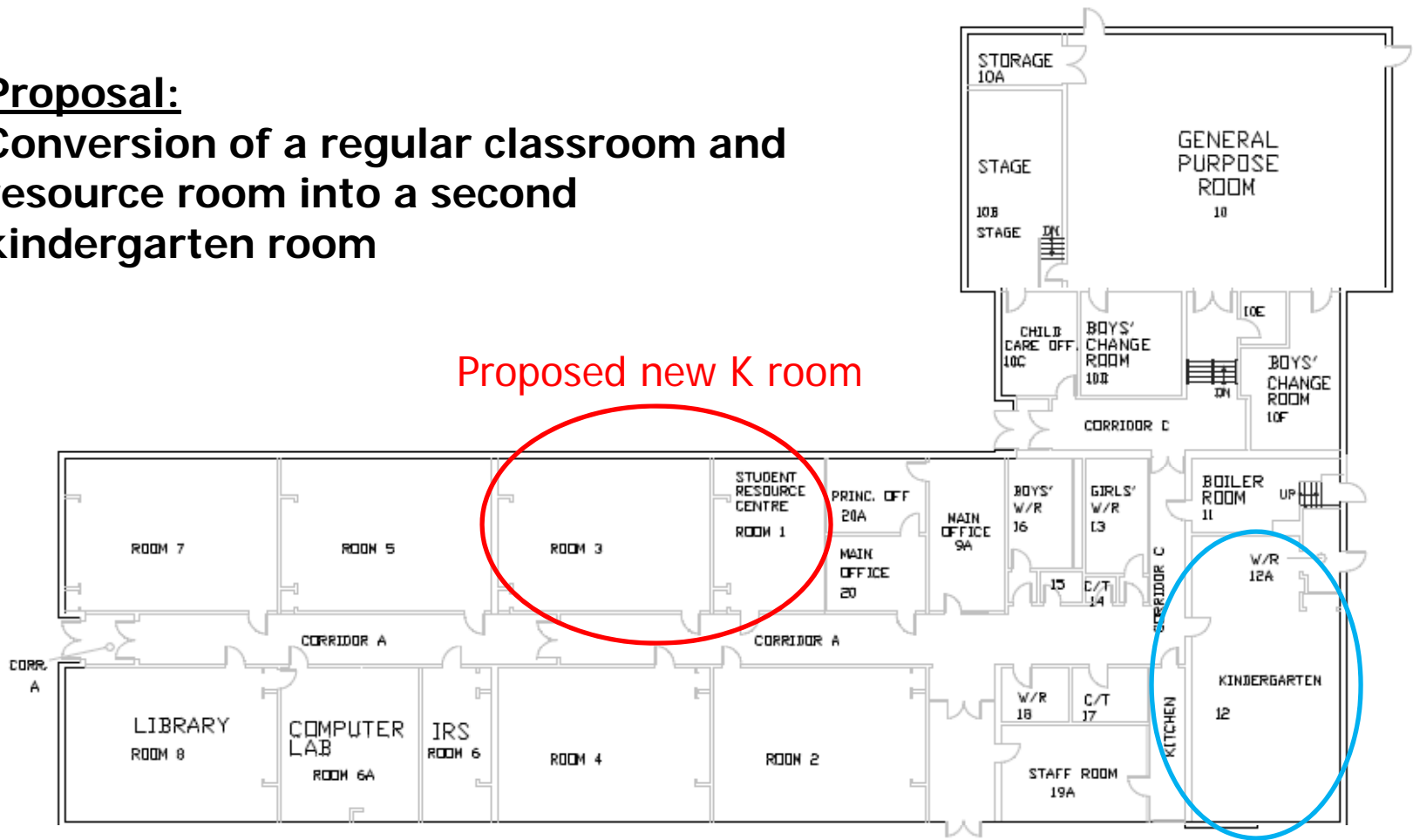
---

- Ministry has provided funding to our Board to implement FDK at George Street PS in September 2014
- Spring JK pre-registration for September 2013 was at 13 students
- Staff took this time to re-evaluate the FDK project at George Street PS

# George Street PS Floor Plan

**Proposal:**

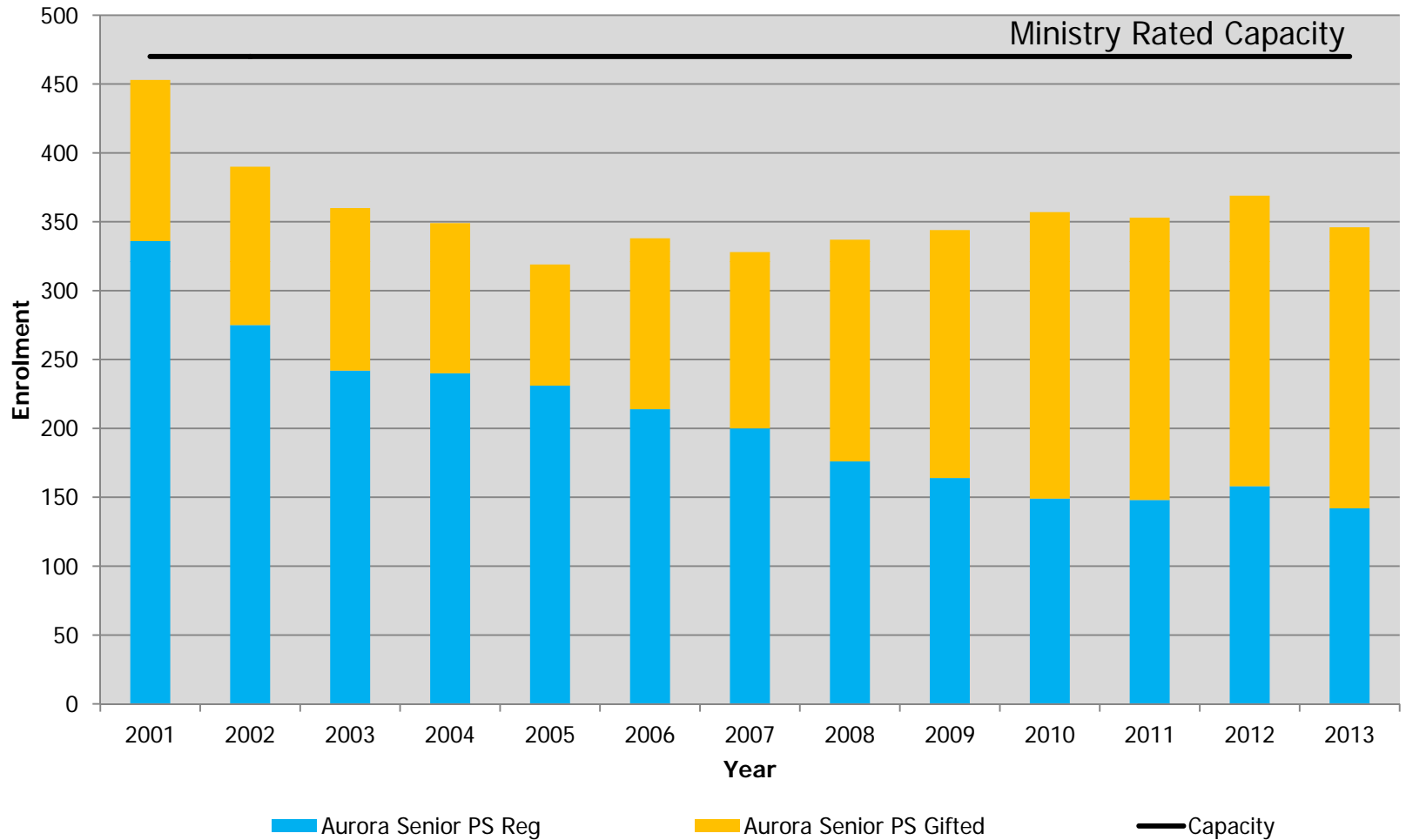
**Conversion of a regular classroom and resource room into a second kindergarten room**



Proposed new K room

Existing K room

# Historical Enrolment for Aurora Senior PS



## Options in 2015/16 School Year

---

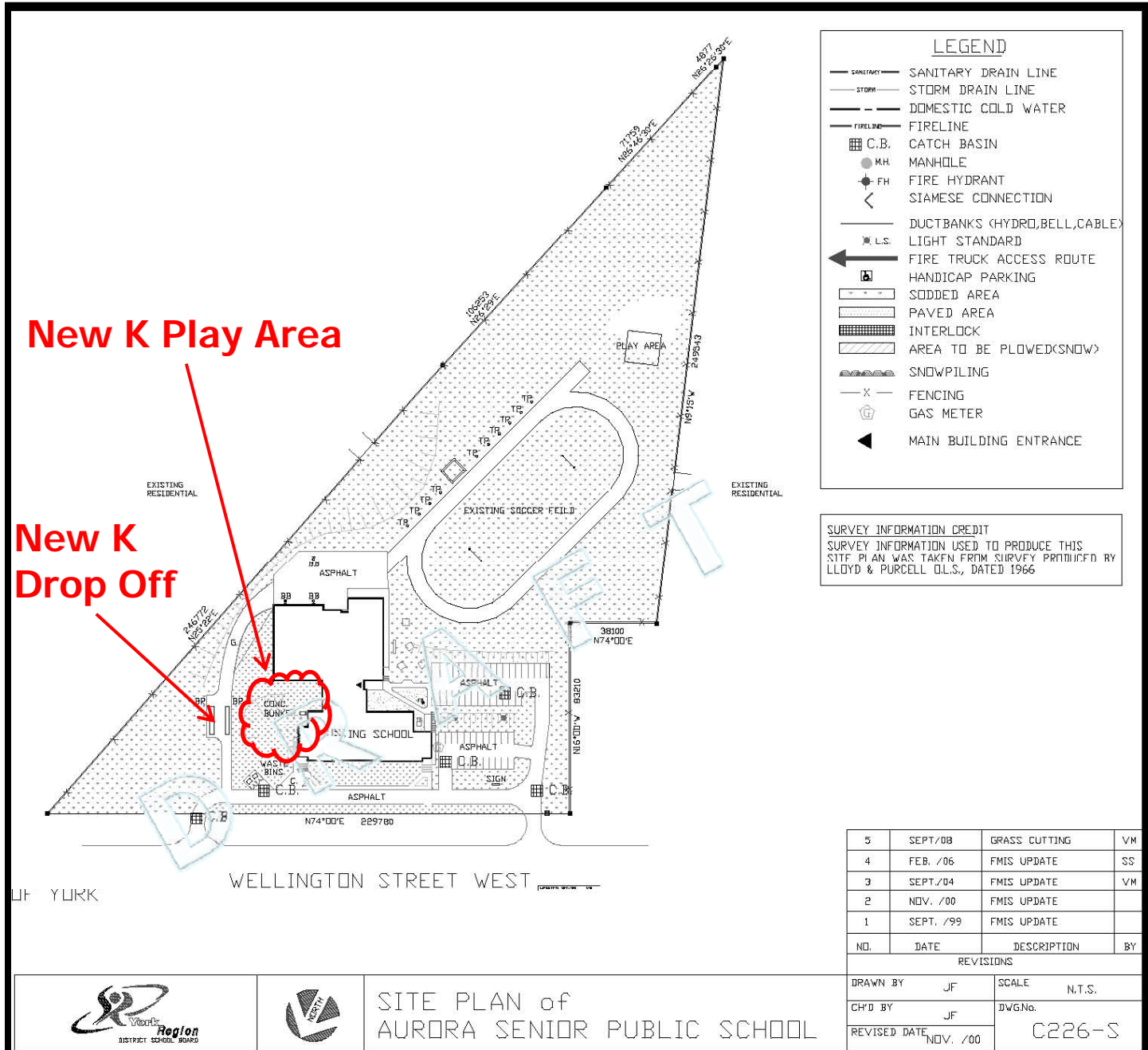
- Considering the projected enrolment at both schools and the available capacity at Aurora Senior PS:
  1. Remain at George Street PS
  2. Accommodate students from both George Street PS and Aurora Senior PS into a newly renovated Aurora Senior PS building that would include the necessary kindergarten spaces

## Feasibility Study

---

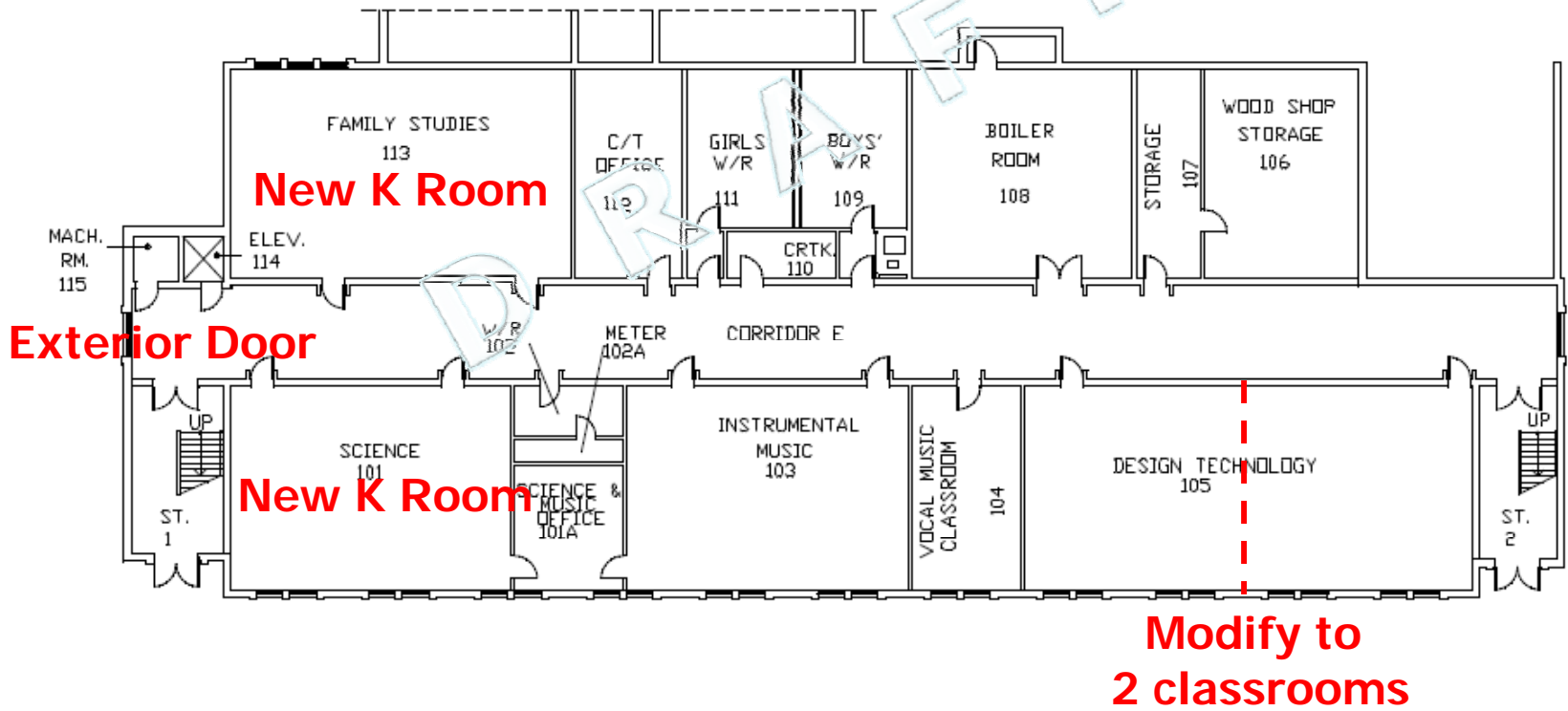
- An architect was asked to investigate at what could be altered at Aurora Senior PS to make it a full JK-8 school
- The project included provisions for:
  - new kindergarten rooms
  - kindergarten outdoor play space and drop off area
  - new art and science room

# Aurora Senior PS – Site Plan





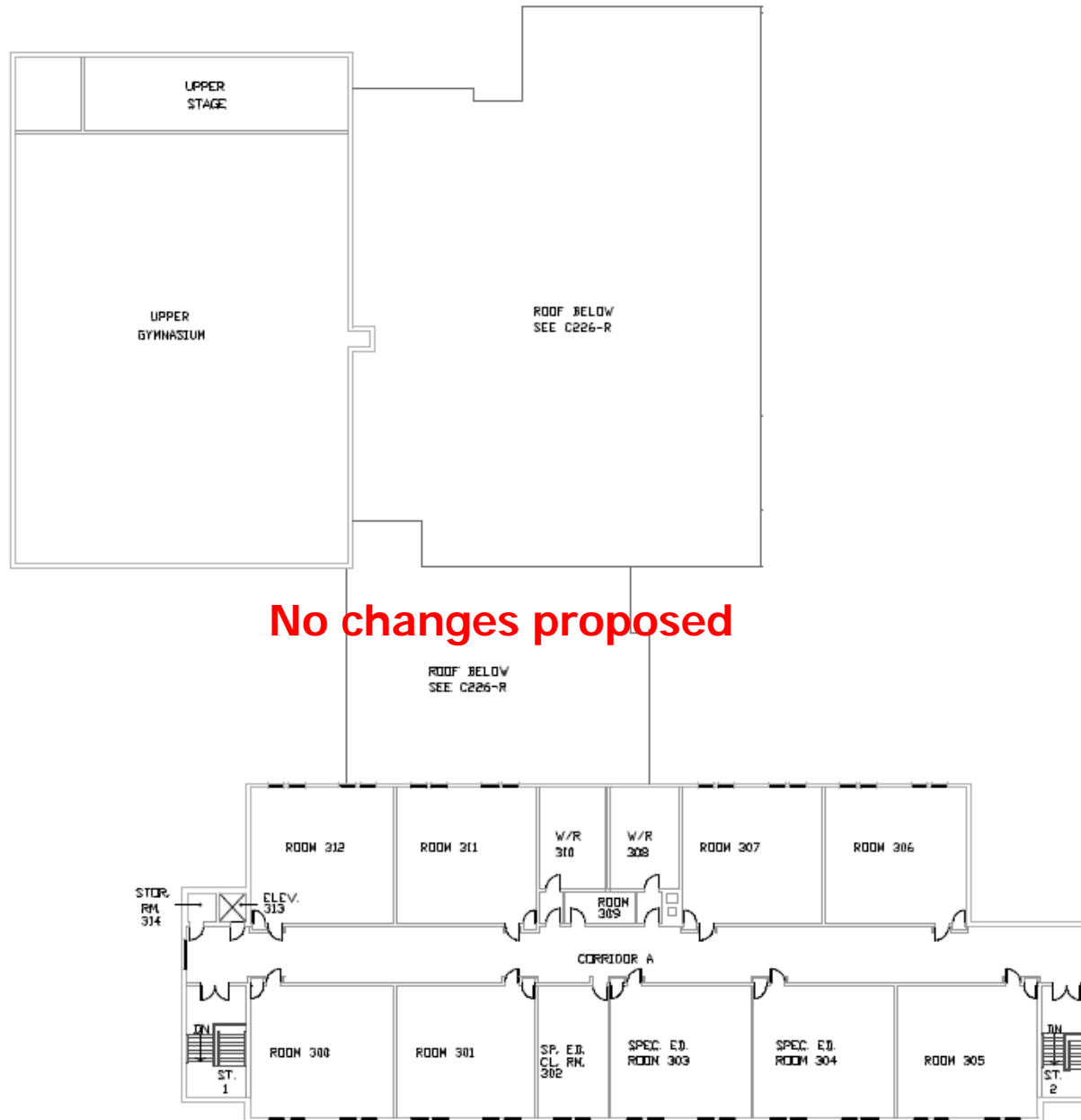
# Aurora Senior PS – First (Sub) Floor



# Aurora Senior PS – Second (Main) Floor



# Aurora Senior PS – Third Floor



# Classroom Space

---

Floor	# Classrooms Before Renovation	# Classrooms After Renovation
First	3	4
Second	7	8
Third	9	9
<b>Total</b>	<b>19</b>	<b>21</b>

= 2 additional classrooms

- Adding the current students together, and creating a school organization with full time kindergarten and including the Gifted program requires 18 classrooms
- Surplus of 3 available classrooms

## Benefits of all Students at Aurora Senior PS

---

- Less transition for Grade 3's
- Siblings would be together
- Single opportunity for school events, concerts, meet the teacher night, council sponsored events, etc.
- Senior students are able to:
  - Help with running school events, especially where money collection is involved
  - Assist primary teachers
  - Help with lunch monitoring
  - Provide reading buddies

## Benefits of all Students at Aurora Senior PS

---

- More efficient for administration
- School class organization could be easier
- Resources can be better shared
- Opportunity for cross divisional teaching
- More cohesive staff, able to monitor student progress from K-8
- More students are within the walkable zone to Aurora Senior PS
- Aurora Senior PS is a large property and has a track for outdoor activities

## Active & Safe Routes to School

---

- Consideration of an Active & Safe Routes to School program for Aurora Senior PS in September 2015 for K-8 students
  - A program to promote active transportation methods including walking, wheeling or taking the bus for the trip to and from school
- Local improvements to facilitate students walking to Aurora Senior PS being reviewed
  - Pathways, traffic calming measures and local sidewalk infrastructure in conjunction with Town staff
  - Pedestrian safety in front of the school



# *An Opportunity!*

In **working together**, school administrators, teachers, parents, students, other school board staff, public health departments and municipalities can develop a **plan** to promote and implement an **Active and Safe Routes to School Program (ASRTS)** which **focuses on active transportation options** at your school.

## *Benefits*

- Improving **student health** by increasing daily exercise
- Improving **student success** by improving health & wellness
- Enhancing **school site safety** by **decreasing** the **volume** of vehicles at school
- Reducing greenhouse gas emissions and other harmful pollutants



## Other Examples of Student Movement

---

- Nobleton Junior PS students attend Nobleton PS since September 2012
- Eva L. Dennis students attend King City PS since September 2009
- Replacement/new schools
  - Oscar Peterson PS in 2008
- Program movements
  - Poplar Banks PS/Phoebe Gilman PS in 2013
  - Elder's Mills PS/Lorna Jackson PS in 2013
  - Ventura Park PS/Wilshire ES beginning in 2009

# George Street PS Property

---

- If the George Street property is not used for day school purposes, staff would embark on a process to determine its use
  - Internally for YRDSB use (i.e. special program, administrative staff)
  - If property is deemed surplus, we would notify other school boards, government agencies, municipality, Region according to Ont. Regulation 444/98 – Disposition of Surplus Real Property
  - Conversations with municipal staff

## Childcare and Before & After Care

---

- Upper Canada Childcare currently uses 1 classroom as a full day childcare centre at George Street PS
- Our childcare coordinator has communicated with the provider as to their requirements once full day kindergarten is offered
- Before & after care would be offered at Aurora Senior PS if all students are located at the Aurora Senior PS building

## Next Steps

---

- Staff/School Council Meeting Nov. 4, 2013
- School Community Meeting Nov. 25, 2013
- Report to Board (decision) Winter/Spring 2014
  
- Proposed timeline:
  - Construction during summer 2015
  - Students accommodated in the newly renovated school for September 2015

# Questions & Feedback



*Supplemental Information*

# George Street PS Ortho

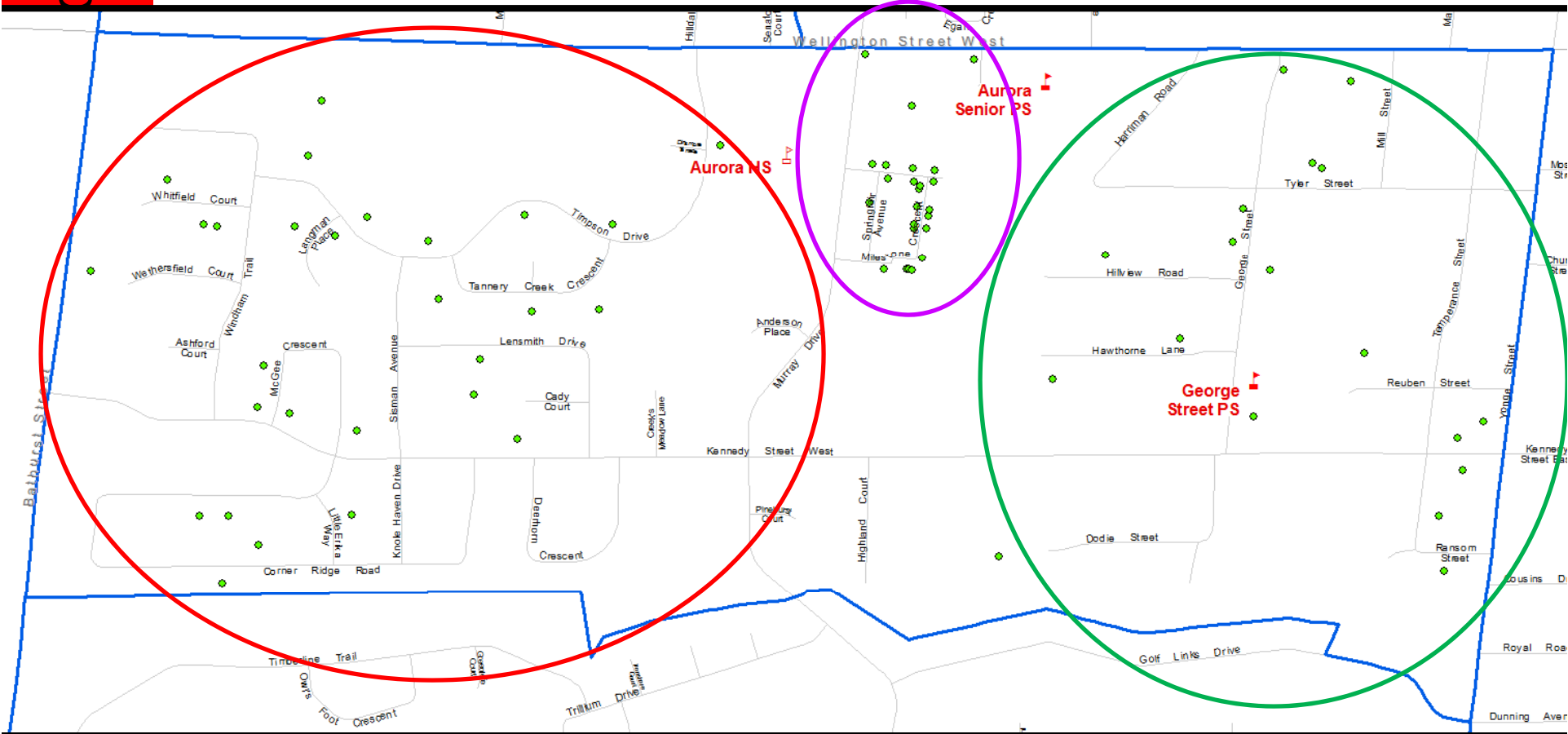


# George St PS Student Distribution

34 students  
(incl. 6 JK, 8 SK)

43 students  
(incl. 7 JK, 16 SK)

16 students  
(incl. 7 JK, 4 SK)



— George St PS boundary  
 2 students reside outside the George St PS boundary  
 Student data as of October 31, 2013

board

Yc