



Windham Ridge PS and Oak Ridges West #2 ES

November 23, 2010

(Revised)

Introductions

Diane Giangrande

J Parappally

Anna Marchetti-Landry

Leon Barton

Dawn Adams

Trustee, Chair of Board

Superintendent of Schools

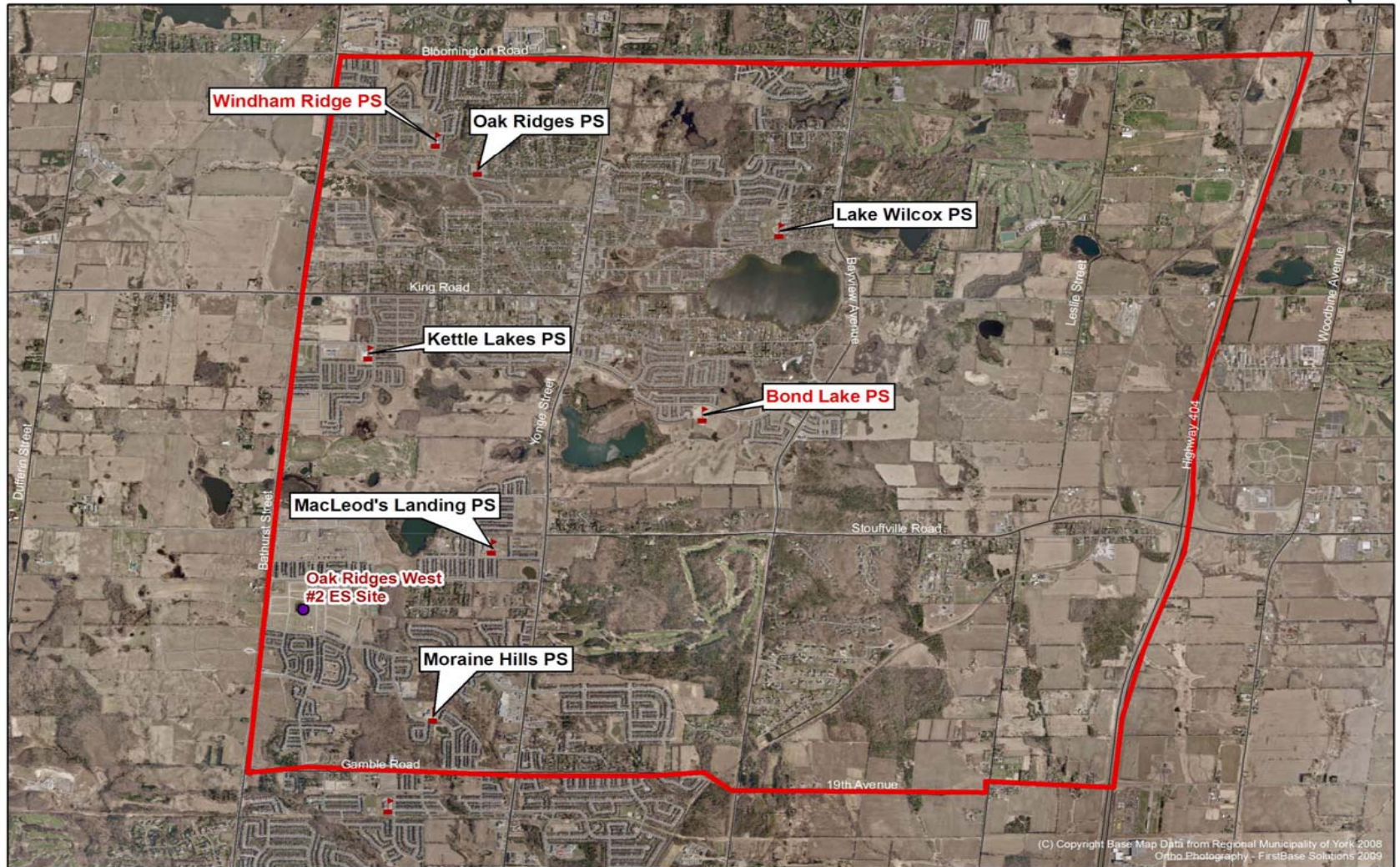
Principal

Vice Principal

Manager, Accommodation

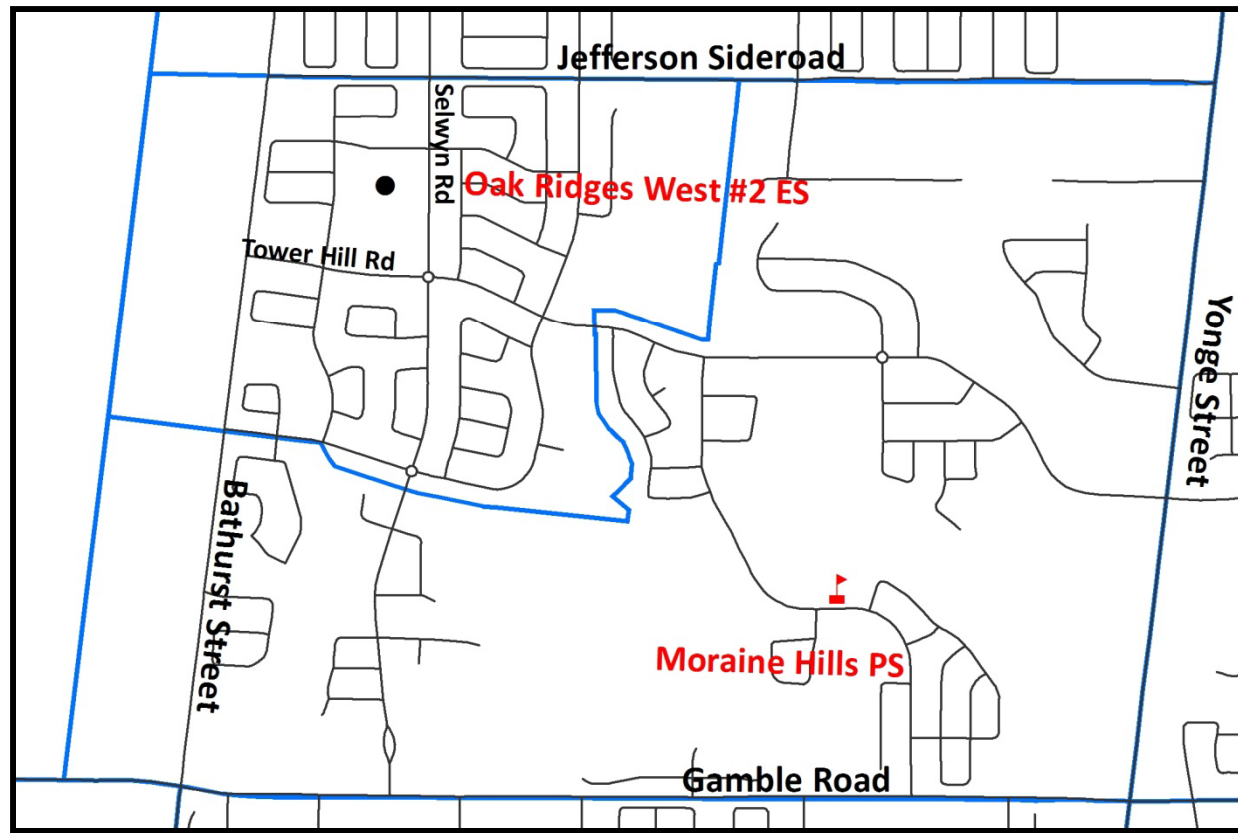
Planning

Oak Ridges Community



Oak Ridges West #2 ES

- Open September 2012
- French Immersion program (Single Track, Grades 1-8)



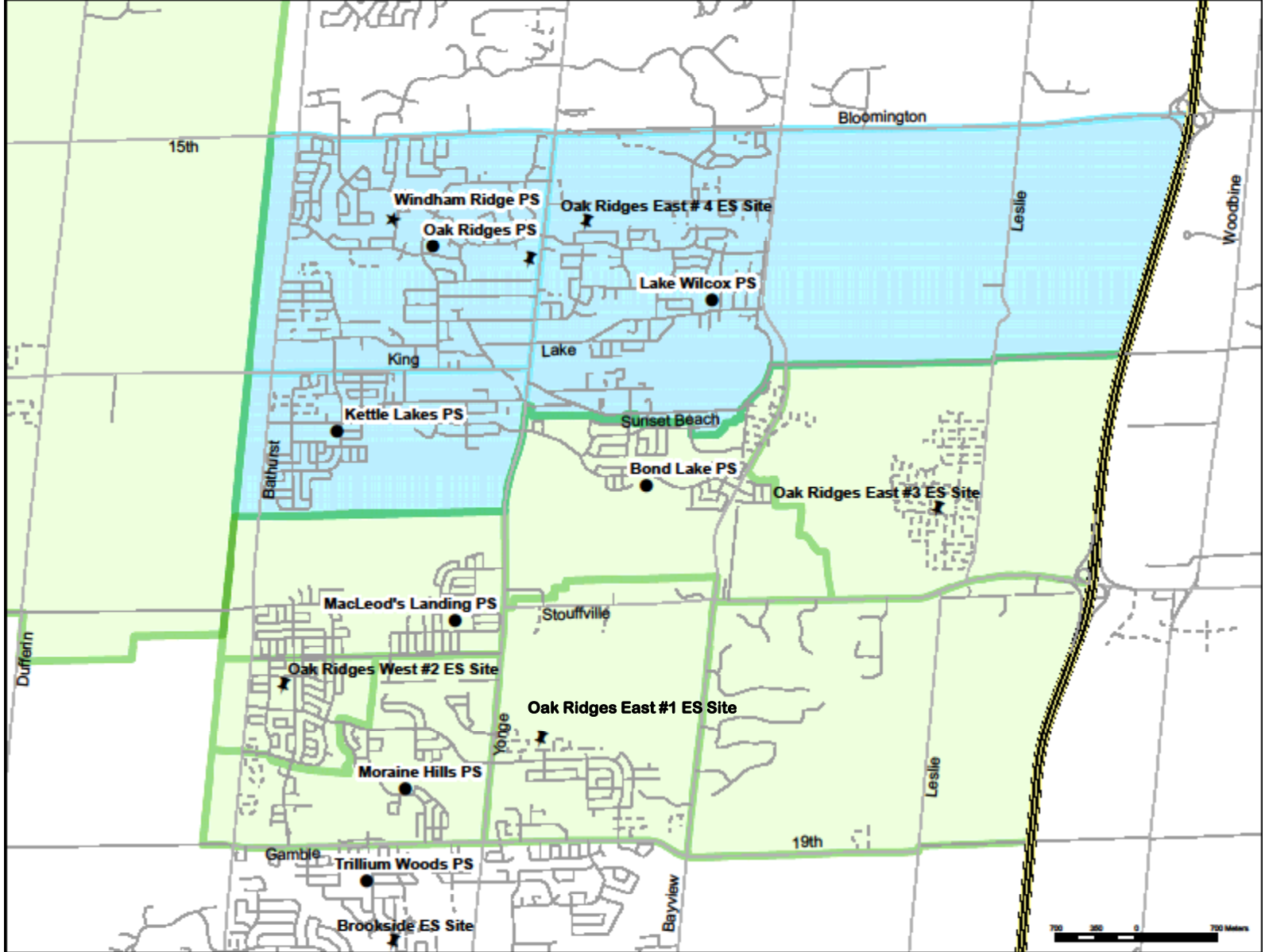
Proposed Feeders for Windham Ridge PS

- Kettle Lakes PS
- Lake Wilcox PS – Section A
- Oak Ridges PS

Proposed Feeders for Oak Ridges West #2 ES

- Bond Lake PS
- King City PS
- Lake Wilcox – Section B (including holding)
- MacLeod's Landing PS
- Moraine Hills PS (including holding)
- Nobleton PS
- Unnamed Oak Ridges East #1

York Region District School Board



Revised Windham Ridge PS

Kettle Lakes PS
Lake Wilcox PS - Section A
Oak Ridges PS

1	2	3	4	5	6	7	8	Total
27	19	23	15	24	6	6	2	122
32	26	18	10	18	12	9	3	128
33	40	26	43	19	16	12	6	195
92	85	67	68	61	34	27	11	445

667	OTG Capacity
29	Classrooms

Classrooms	4	4.5	4.5	4	3	3	3	3	29
Load	23	20	20	20	26	26	26	26	
Students	92	90	90	80	78	78	78	78	664

Oak Ridges West #2 ES

Bond Lake PS

King City PS

Lake Wilcox PS - Section B / Oak Ridges East #1
(including holding)

MacLeod's Landing PS

Moraine Hills PS (including holding)

Nobleton PS

1	2	3	4	5	6	7	8	Total
21	15	12	7	6	8	1	7	77
6	3	4	6	2	7	2	4	34
6	8	6	5	5	2	7	3	42
12	8	3	2	4	5	2	3	39
29	10	15	10	7	5	6	7	89
2		3		1			1	7
76	44	43	30	25	27	18	25	288

Classrooms	4	4.5	4.5	4	3	3	3	3	29
Load	23	20	20	20	26	26	26	26	
Students	92	90	90	80	78	78	78	78	664

736

OTG Capacity

32

Classrooms

2011 Accommodation Plan

- Windham Ridge PS needs to overflow 4 classrooms for 2011
- Kettle Lakes PS has been selected as the overflow site
- All grade 1 students residing within the new Oak Ridges West #2 ES boundary will be overflowed to Kettle Lakes PS for 2011 only

2012 Accommodation Plan

- New School opens
- Overflowed grade 1 students from Kettle Lakes PS move to new school for grade 2
- Current Windham Ridge PS grade 2 to 6 students residing within the new Oak Ridges West #2 ES boundary will move to the new school
- Current Windham Ridge PS grade 7 students residing within the new Oak Ridges West #2 ES boundary remain at Windham Ridge PS for grade 8

Boundary Process for Oak Ridges West #2 ES

November 23, 2010 Community Meeting

January 2011 Public Meeting for creation of new boundary

February 2011: Take recommended boundary change to Programming Planning Committee

March 2011: Take recommended boundary change to Board Standing and Board for final approval

September 2011: Implementation

Oak Ridges Development

