



**Oak Ridges West #2 ES,  
Moraine Hills PS and  
Windham Ridge PS**

January 13, 2011

# Introductions

---

Diane Giangrande  
J Parappally  
Denise McLafferty  
Anna Marchetti-Landry  
Dawn Adams

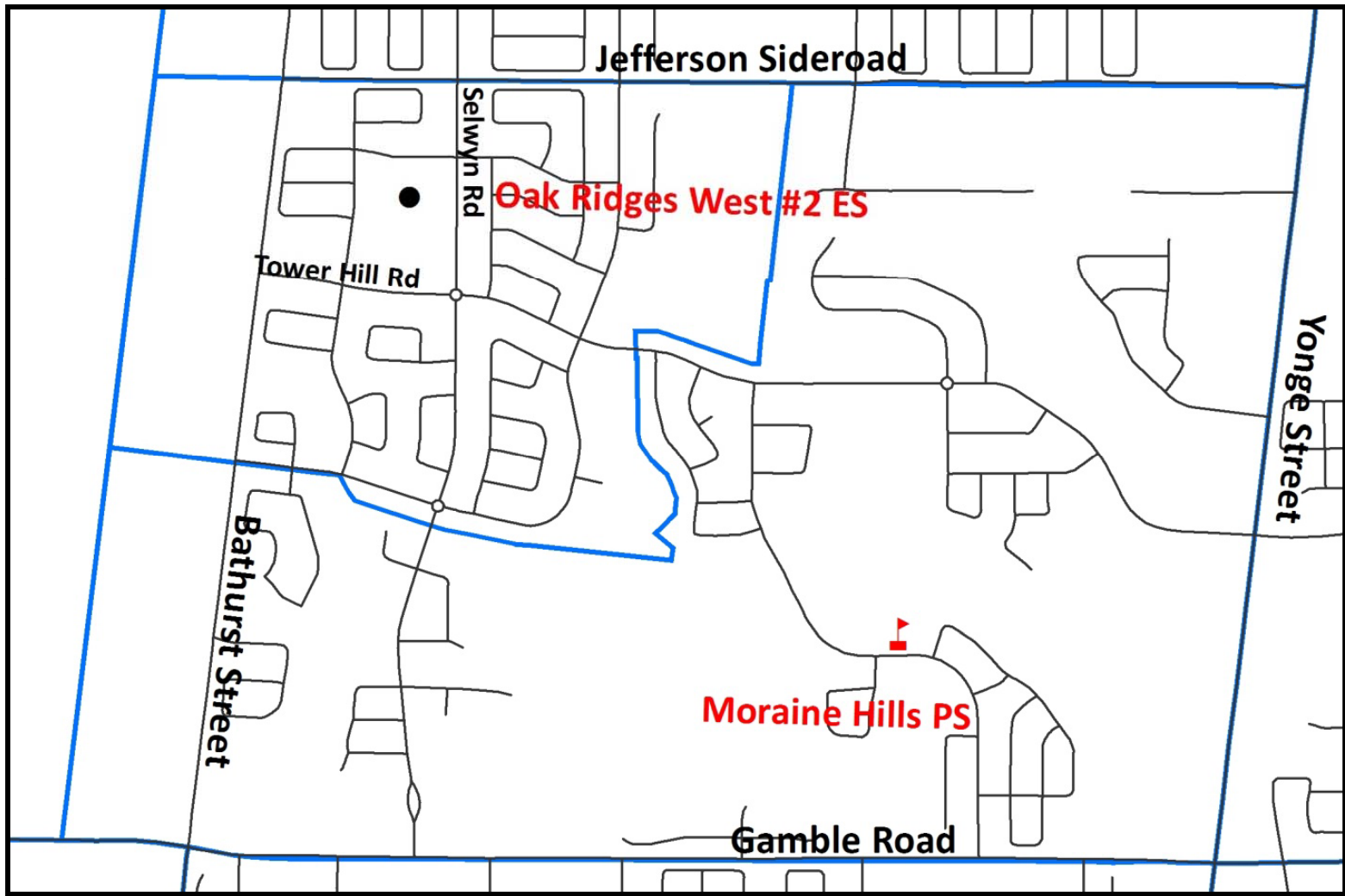
Trustee, Chair of Board  
Superintendent of Schools  
Principal  
Principal, Windham Ridge PS  
Manager, Accommodation  
Planning

## Oak Ridges West #2 ES

---

- Opens September 2012
- Single Track French Immersion School (grades 1-8)

# Moraine Hills PS and Oak Ridges West #2 ES



## Required Boundary Changes

- Creation of the new FI Unnamed Oak Ridges West #2 ES
  - Windham Ridge PS: division of boundary
- Merging of Moraine Hills PS and the regular track boundary from the Unnamed Oak Ridges West #2 ES

## Students attending Moraine Hills PS

	JK	SK	1	2	3	4	5	6	7	8	
Oak Ridges West #2 ES	26	20	25	21	22	14	22	17	11	19	197
Moraine Hills PS	25	28	30	32	36	28	34	36	34	34	317
Out of Area Students	4	1	2	1	3	0	0	2	5	0	18
	55	49	57	54	61	42	56	55	50	53	532

## Oak Ridges West #2 ES

---

- Oak Ridges West #2 ES has been holding at Moraine Hills PS
- Low student population from current and potential development to warrant an additional elementary school in planning block
- Oak Ridges West #2 ES will be merged with Moraine Hills PS regular track boundary

## Students attending Windham Ridge PS

	1	2	3	4	5	6	7	8	
Windham Ridge PS	166	131	111	99	89	63	47	39	745
	166	131	111	99	89	63	47	39	745



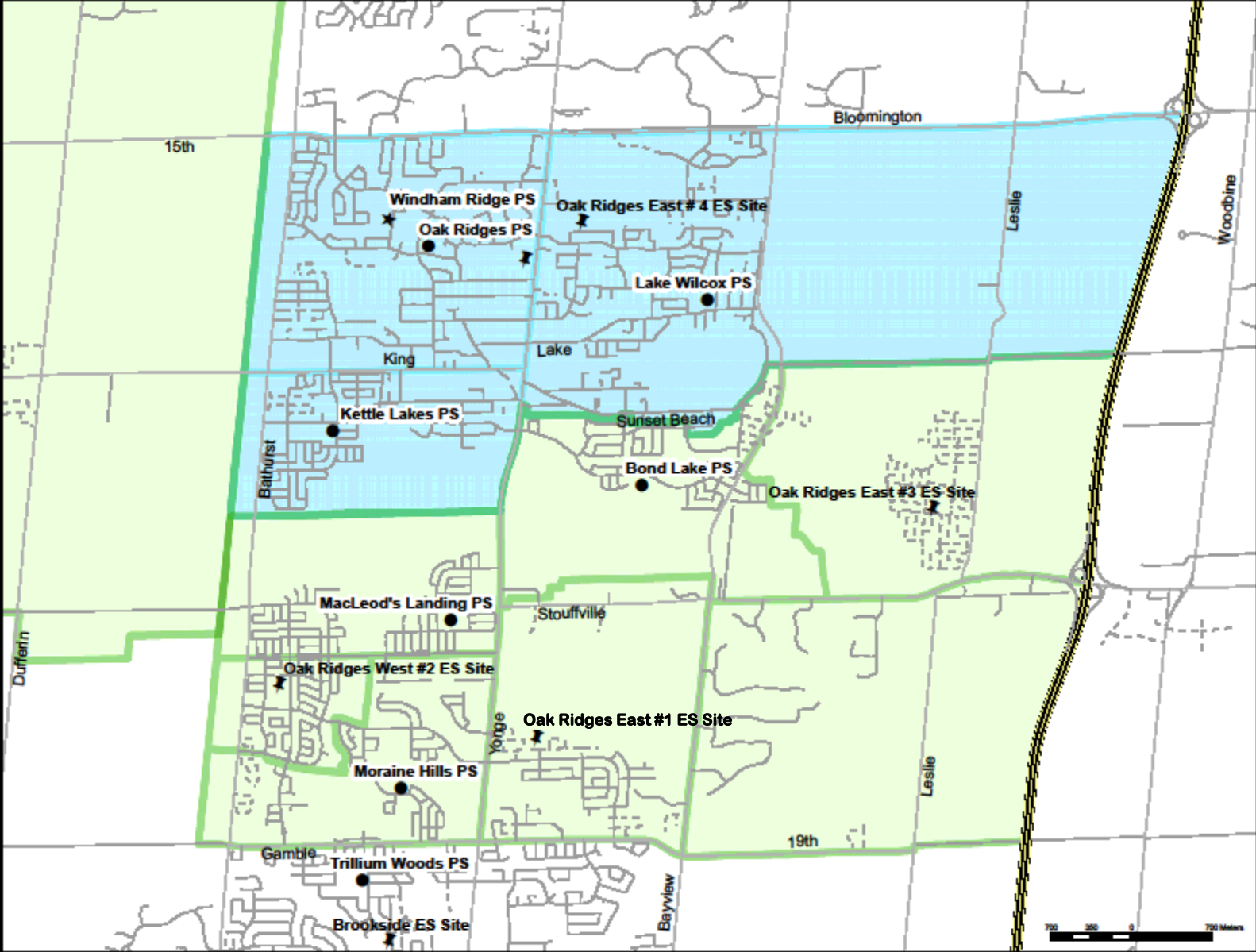
## Proposed Feeders for Windham Ridge PS

- Kettle Lakes PS
- Lake Wilcox PS – Section A
- Oak Ridges PS

## Proposed Feeders for Oak Ridges West #2 ES

- Bond Lake PS
- King City PS
- Lake Wilcox – Section B (including holding)
- MacLeod's Landing PS
- Moraine Hills PS (including holding)
- Nobleton PS
- Unnamed Oak Ridges East #1 ES

# York Region District School Board



# Revised Windham Ridge PS

Kettle Lakes PS  
 Lake Wilcox PS - Section A  
 Oak Ridges PS

1	2	3	4	5	6	7	8	Total
27	19	23	15	24	6	6	2	122
32	26	18	10	18	12	9	3	128
33	40	26	43	19	16	12	6	195
92	85	67	68	61	34	27	11	445

667	OTG Capacity
29	Classrooms

Classrooms	4	4.5	4.5	4	3	3	3	3	29
Load	23	20	20	20	26	26	26	26	
Students	92	90	90	80	78	78	78	78	664

# Oak Ridges West #2 ES

Bond Lake PS  
 King City PS  
 Lake Wilcox PS - Section B / Oak Ridges East #1  
 (including holding)  
 MacLeod's Landing PS  
 Moraine Hills PS (including holding)  
 Nobleton PS

1	2	3	4	5	6	7	8	Total
21	15	12	7	6	8	1	7	77
6	3	4	6	2	7	2	4	34
6	8	6	5	5	2	7	3	42
12	8	3	2	4	5	2	3	39
29	10	15	10	7	5	6	7	89
2		3		1			1	7
76	44	43	30	25	27	18	25	288

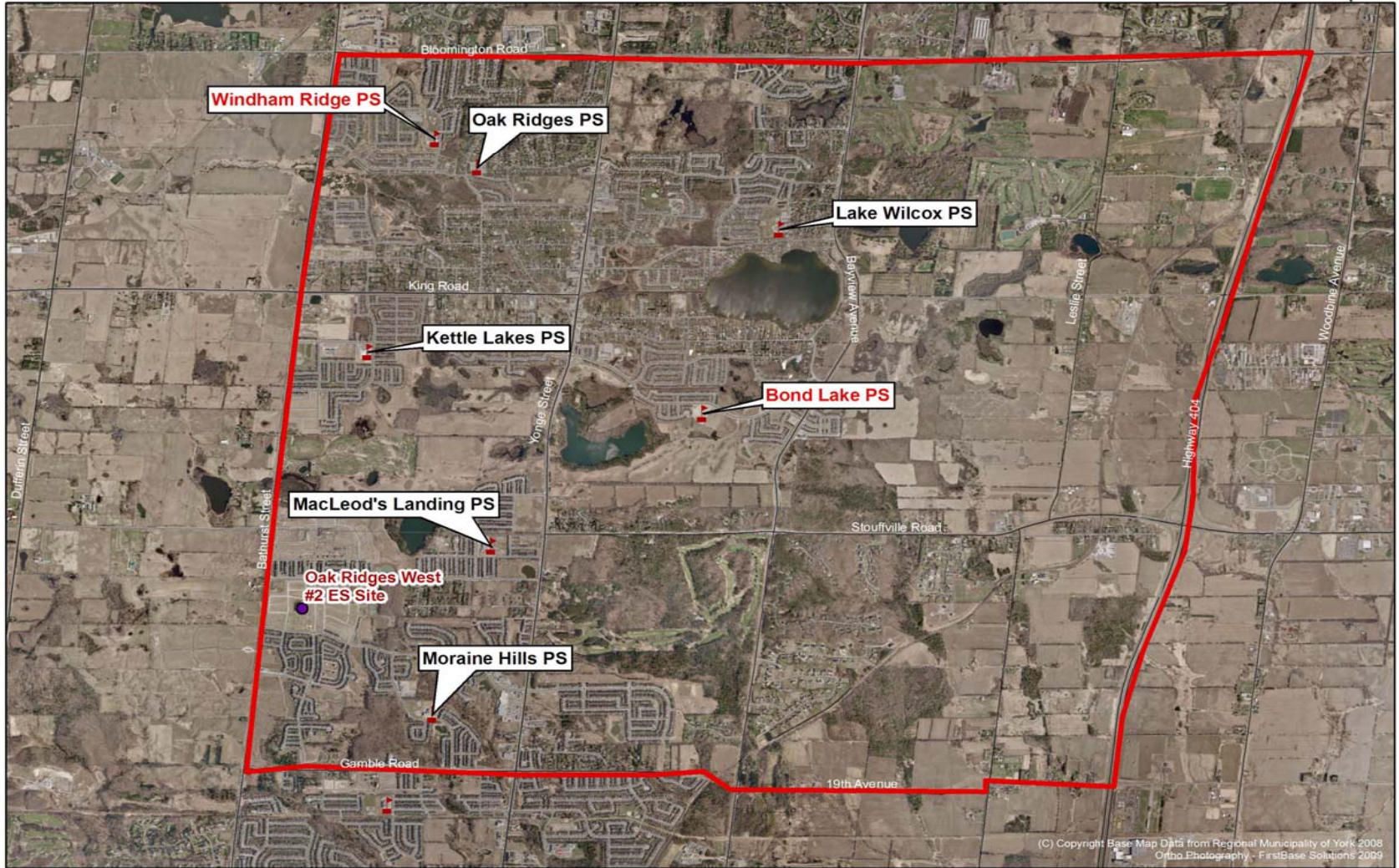
736	OTG Capacity
32	Classrooms

Classrooms	4	4.5	4.5	4	3	3	3	3	29
Load	23	20	20	20	26	26	26	26	
Students	92	90	90	80	78	78	78	78	664

## 2011 Accommodation Plan

- Windham Ridge PS needs to overflow 4 classrooms for 2011
- Kettle Lakes PS has been selected as the overflow site
- All grade 1 students residing within the new Oak Ridges West #2 ES boundary will be overflowed to Kettle Lakes PS for 2011 only

# Oak Ridges Community





## 2012 Accommodation Plan

- New School opens
- Overflowed 2011 grade 1 students from Kettle Lakes PS move to new school for grade 2
- Current 2010 Windham Ridge PS grade 1 to 5 students residing within the new Oak Ridges West #2 ES boundary will move to the new school
- Current 2010 Windham Ridge PS grade 6 students residing within the new Oak Ridges West #2 ES boundary remain at Windham Ridge PS for grade 8



## Boundary Process for Oak Ridges West #2 ES

---

November 23, 2010	Windham Ridge PS School Council
December 13, 2010	Moraine Hills PS School Council
January 13, 2011	Public Meeting for creation of new boundary
February 2011:	Take recommended boundary change to Programming Planning Committee
March 2011:	Take recommended boundary change to Board Standing and Board for final approval
September 2011:	Implementation