



Trillium Woods PS and Silver Pines PS Boundary Review

Silver Pines PS School Council

November 5, 2012

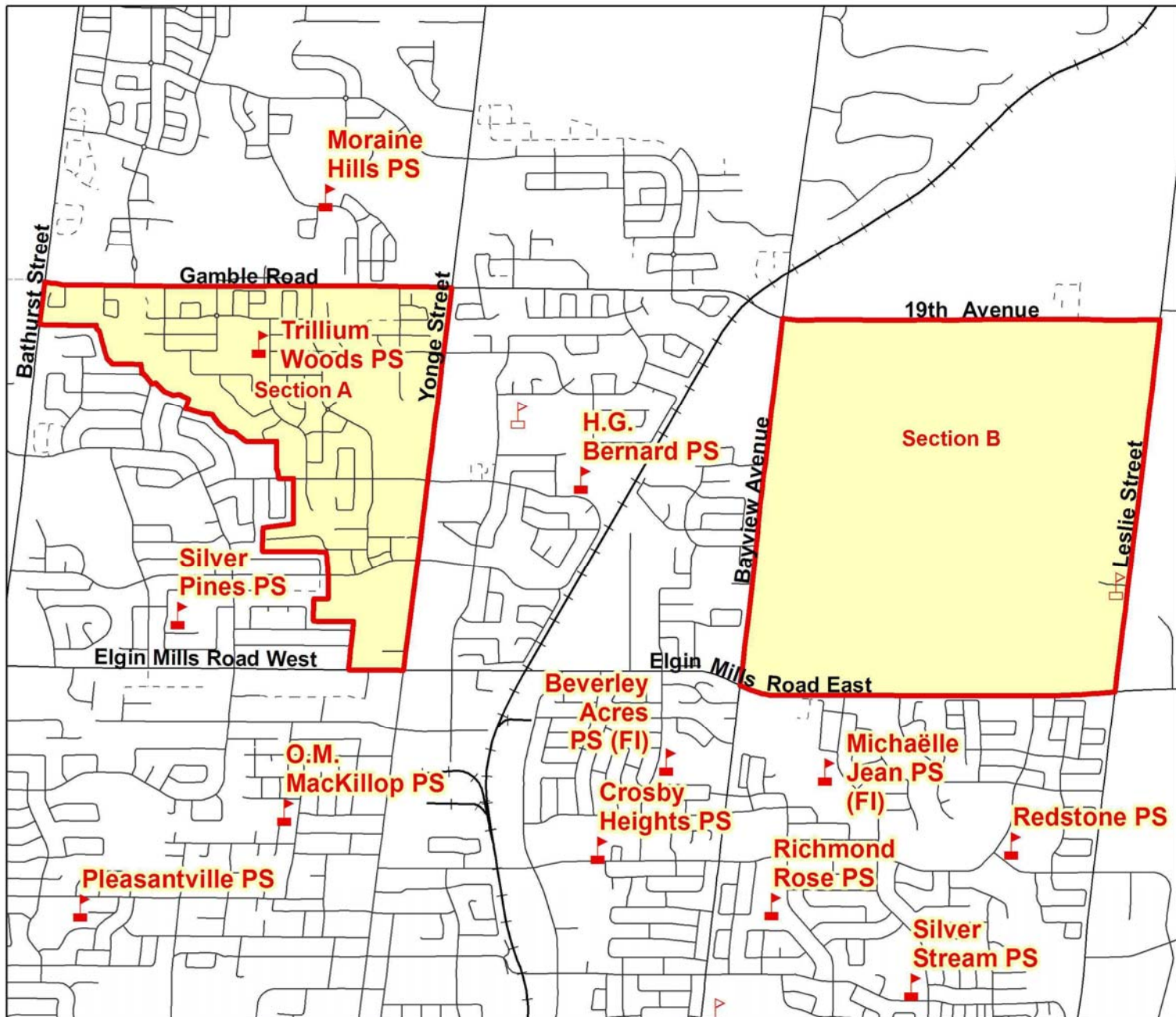
Welcome and Introductions

- Clayton LaTouche – Superintendent
- Aneta Fishman– Principal, Silver Pines PS
- Shannon Philp – Vice Principal, Silver Pines PS
- Trina Sprayson– Associate Manager – Accommodation Planning
- Gilbert Luk – Planner

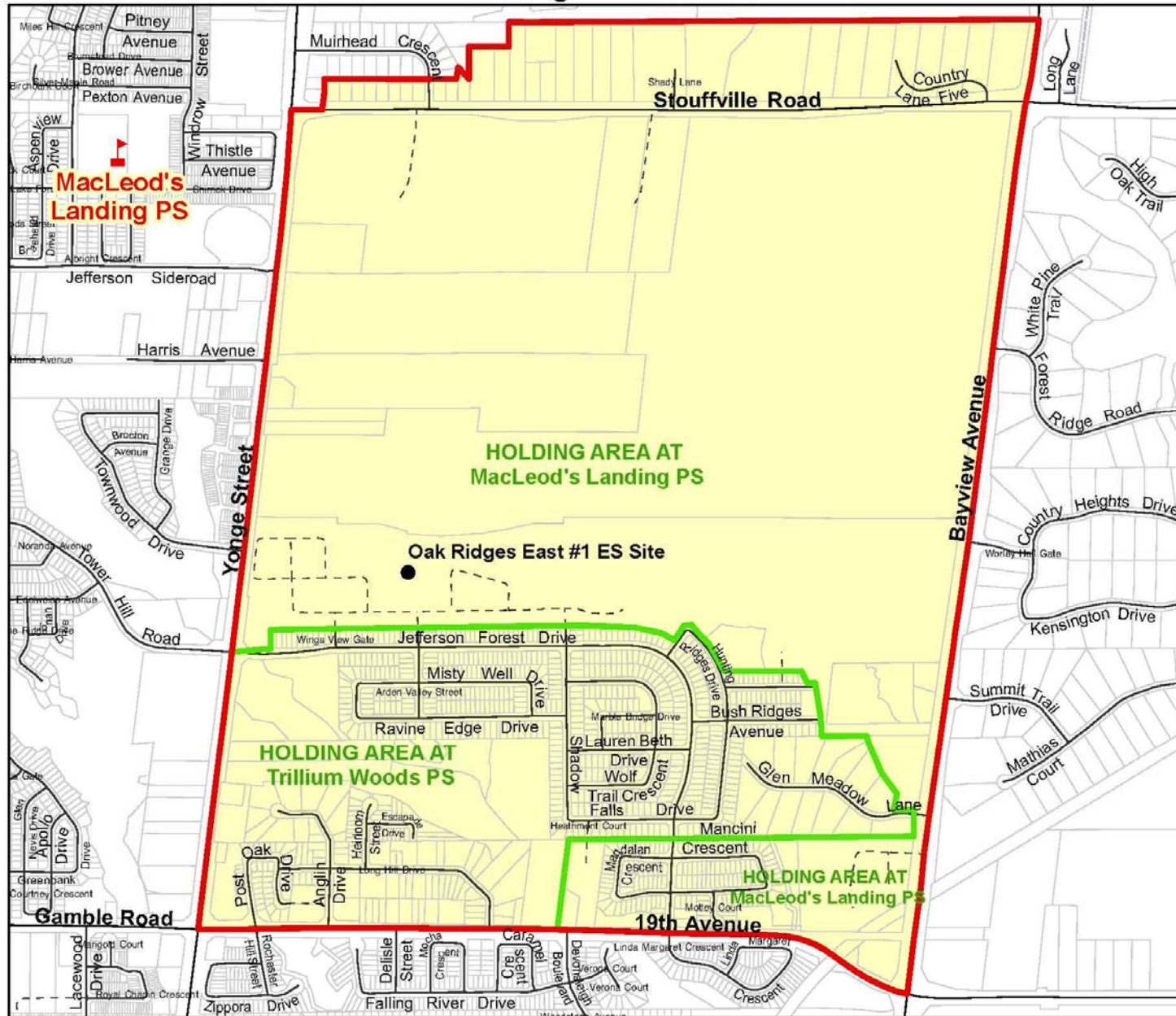
Agenda

1. Current Boundaries and holding areas
2. Development remaining in Silver Pines PS and Trillium Woods PS Boundaries
3. Proposed Boundaries
4. Implementation
5. Questions?

Trillium Woods PS, Town of Richmond Hill



Unnamed Oak Ridges East #1, Town of Richmond Hill

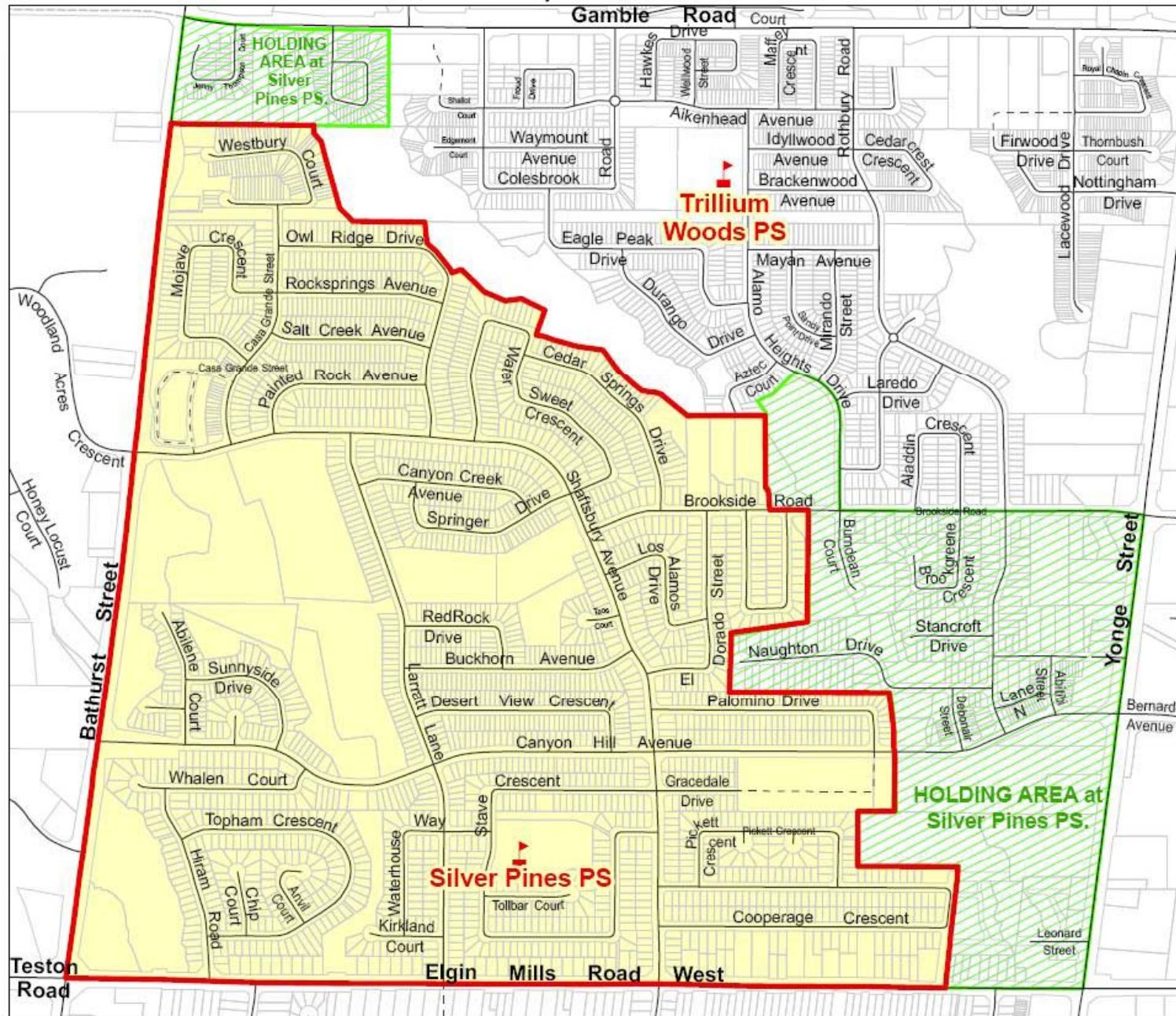


Residential Development in Unnamed Oak Ridges East #1 ES Boundary

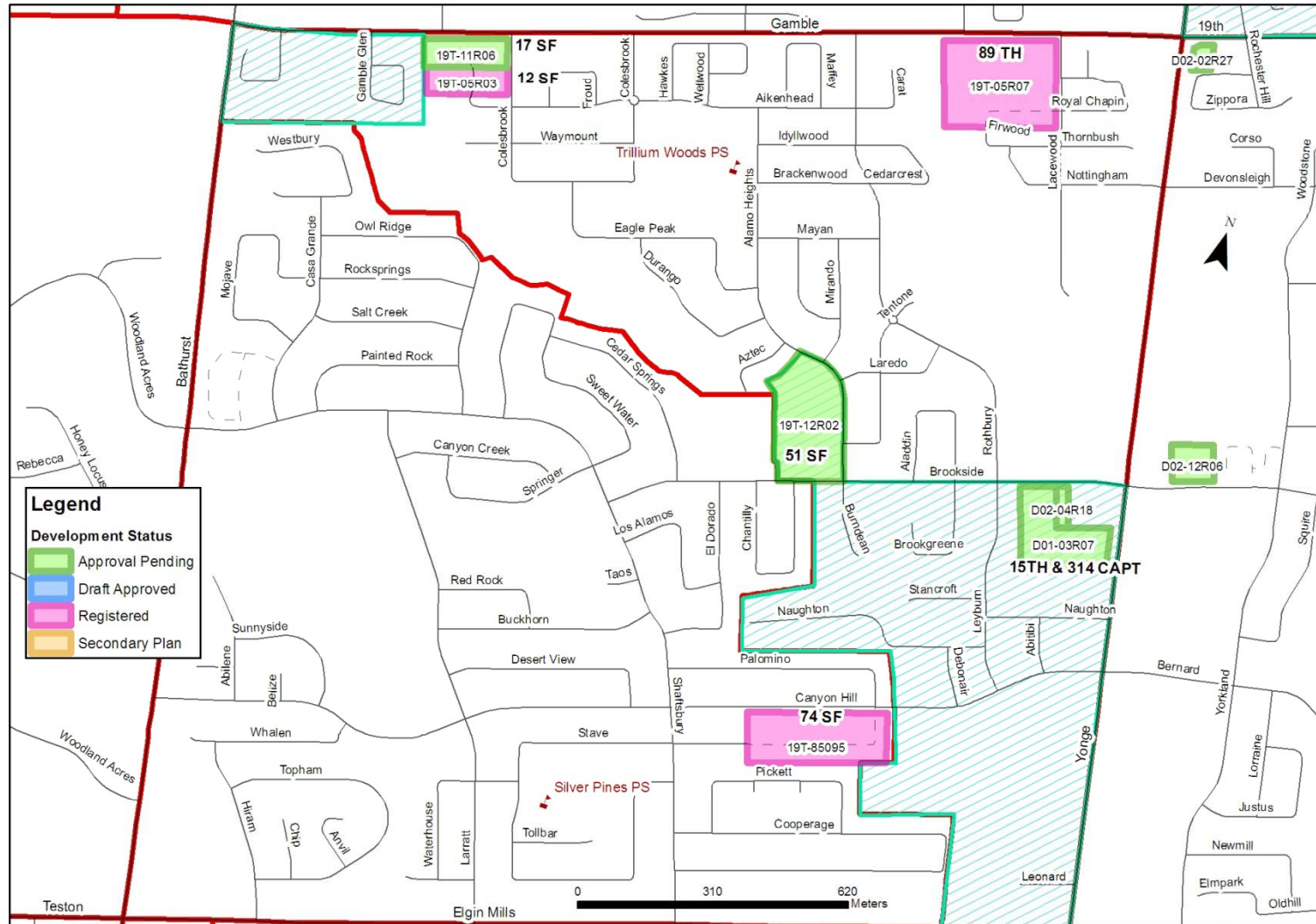
- Trillium Woods PS is the holding school for students from the Jefferson Forest (Unnamed Oak Ridges East #1 ES Site) area.
- Due to impending development within the Unnamed Oak Ridges East #1 boundary and enrolment pressure at Trillium Woods PS; a new holding area was established in the Unnamed Oak Ridges East #1 boundary in March 2012 to redirect students from new development to MacLeod's Landing PS

York Region District School Board

Silver Pines PS, Town of Richmond Hill



Development Remaining in Silver Pines PS and Trillium Woods PS boundaries



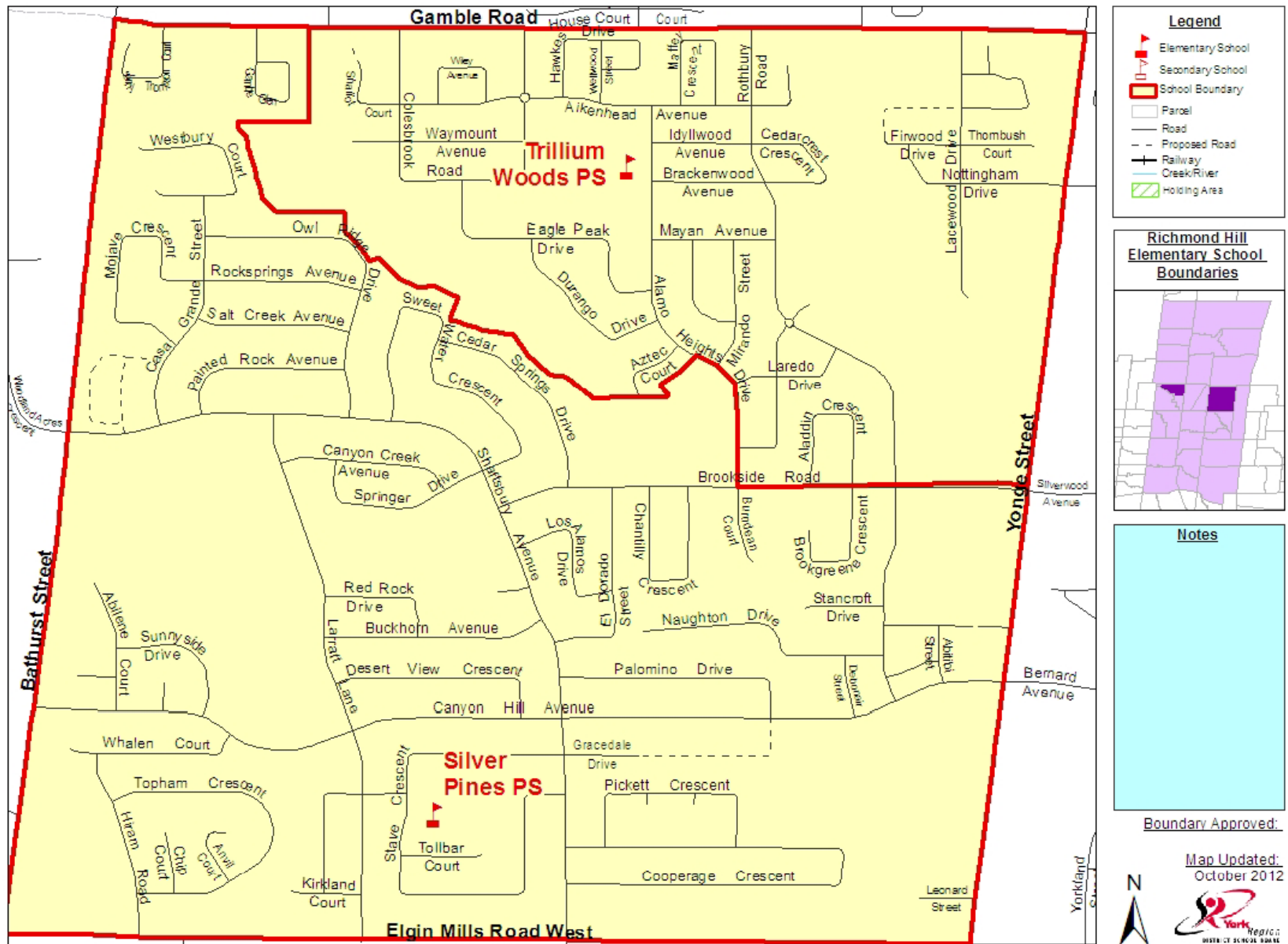
Development in Silver Pines PS/Trillium Woods PS boundaries

- Within the proposed Silver Pines PS boundary;
 - There are approximately 2,700 units built with majority of the units built before 1999
 - Approximately 140 low/medium density units remain to be built and a high density building with 314 proposed units (awaiting approval)
 - The community has gone through “peak yield” and enrolment is projected to decline
- In the proposed Trillium Woods PS boundary;
 - There are approximately 1,600 units built with majority of the units built after 2000
 - Approximately 120 units of low and medium density units remaining to be built
 - Is currently experiencing “peak yield” due to the younger age of the community compared to Silver Pines PS community

Proposal

- The area within Trillium Woods PS that is holding at Silver Pines PS be attached permanently to Silver Pines PS boundary effective September 2013

Proposed Trillium Woods PS - Section A and Silver Pines PS Boundaries



Silver Pines PS and Trillium Woods PS Projections

Proposed Silver Pines PS Projection

Year	Total
2012	713
2013	623
2014	585
2015	554
2016	502
2017	480

Capacity : 717

Proposed Trillium Woods PS Projection

Year	Total
2012	659
2013	637
2014	607
2015	596
2016	566
2017	548

Capacity : 533 + 6P = 671

- There are currently 55 students in the proposed area to be attached to Silver Pines PS (43 at Trillium Woods PS and 12 at Silver Pines PS)
- Silver Pines PS and Trillium Woods PS projections assumes all students in affected area choose to attend Silver Pines PS starting in September 2013
- Silver Pines PS projection does not include overflow students from Herbert H. Carnegie PS or Trillium Woods PS in 2013+

Implementation

- Students currently attending Trillium Woods PS and residing within the proposed boundary change area will be offered the option to remain at Trillium Woods PS until graduation
- Transportation will be provided according to the Board's Student Transportation Policy 680.0

Process

October/

November 2012: Trillium Woods PS and Silver Pines PS
School Council Meetings

November 29, 2012 Public Meeting at Silver Pines PS

February 2013: Take recommended boundary change to
Program Planning Committee

March 2013: Take recommended boundary change to
Board Standing and Board for final
approval

September 2013 Implementation

Questions??
