



# Trillium Woods PS and Silver Pines PS Boundary Review Meeting

November 29, 2012

## Welcome and Introductions

---

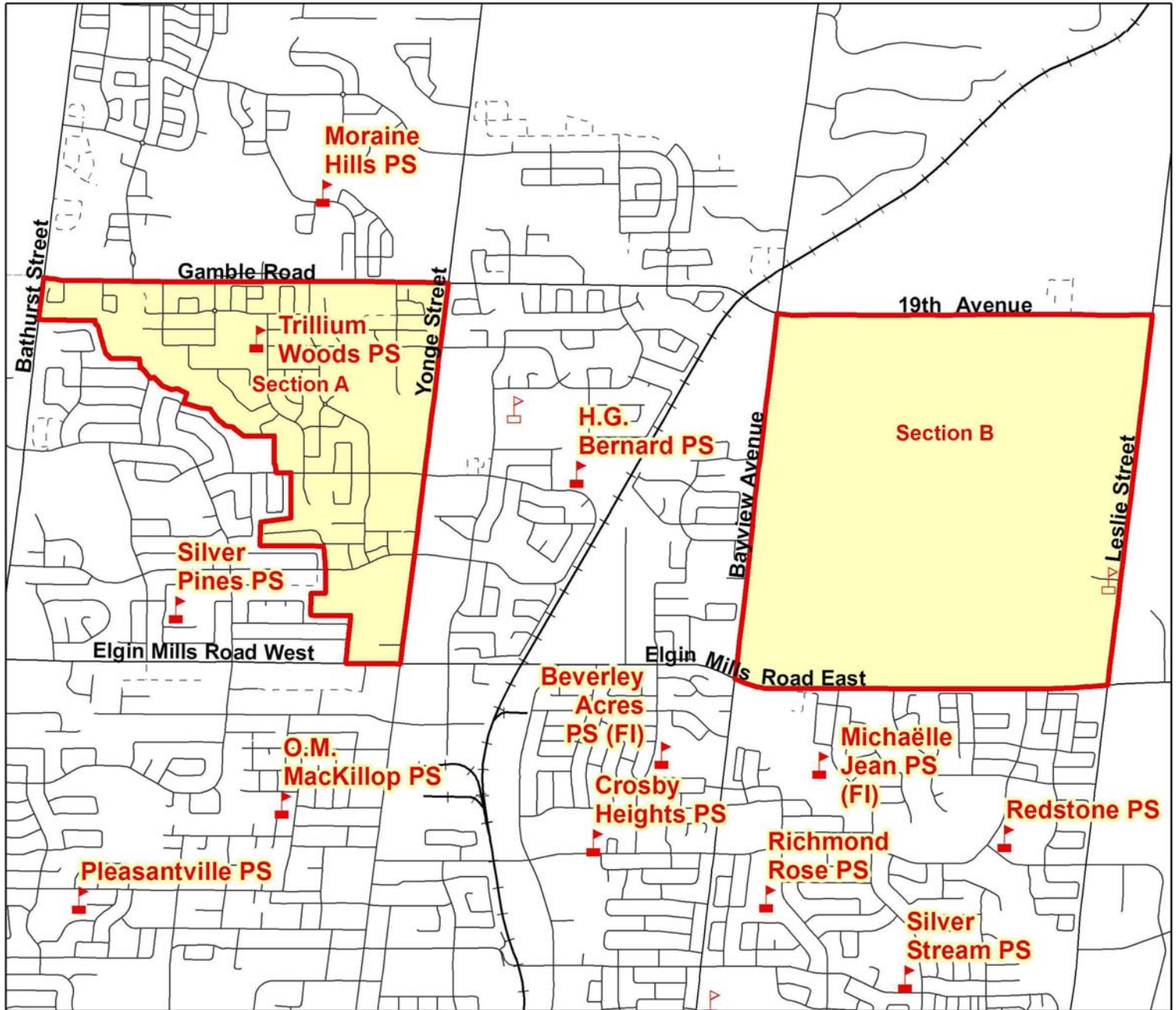
- Diane Giangrande - Trustee
- Clayton LaTouche – Superintendent
- Aneta Fishman– Principal, Silver Pines PS
- Shannon Philp – Vice Principal, Silver Pines PS
- Wendy Swaine – Vice Principal, Trillium Woods PS
- Trina Sprayson– Associate Manager – Accommodation Planning
- Gilbert Luk – Planner

## Agenda

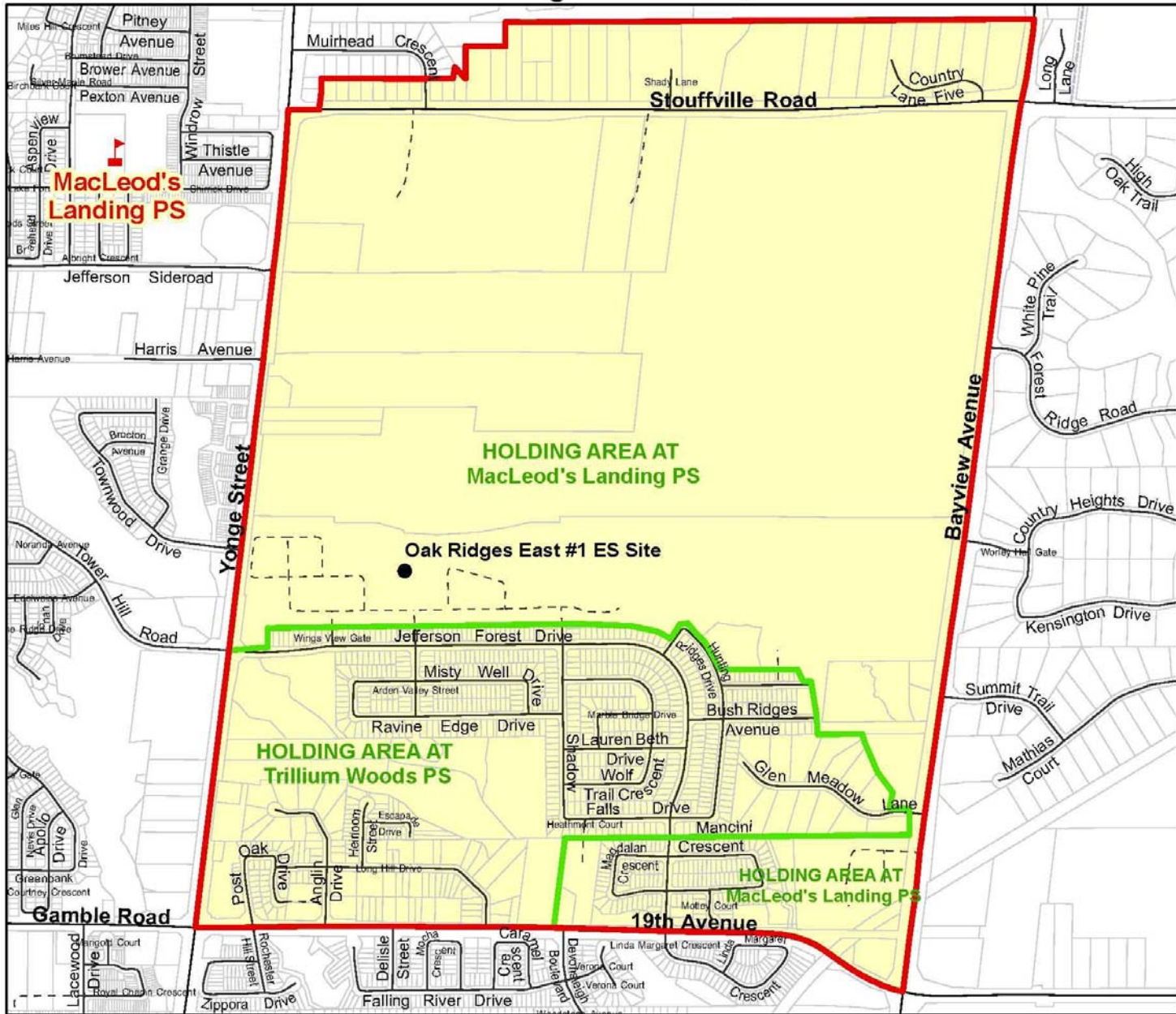
---

1. Current Boundaries and holding areas
2. Development remaining in Silver Pines PS and Trillium Woods PS Boundaries
3. Proposed Boundaries
4. Implementation
5. Questions?

# Trillium Woods PS, Town of Richmond Hill



# Unnamed Oak Ridges East #1, Town of Richmond Hill

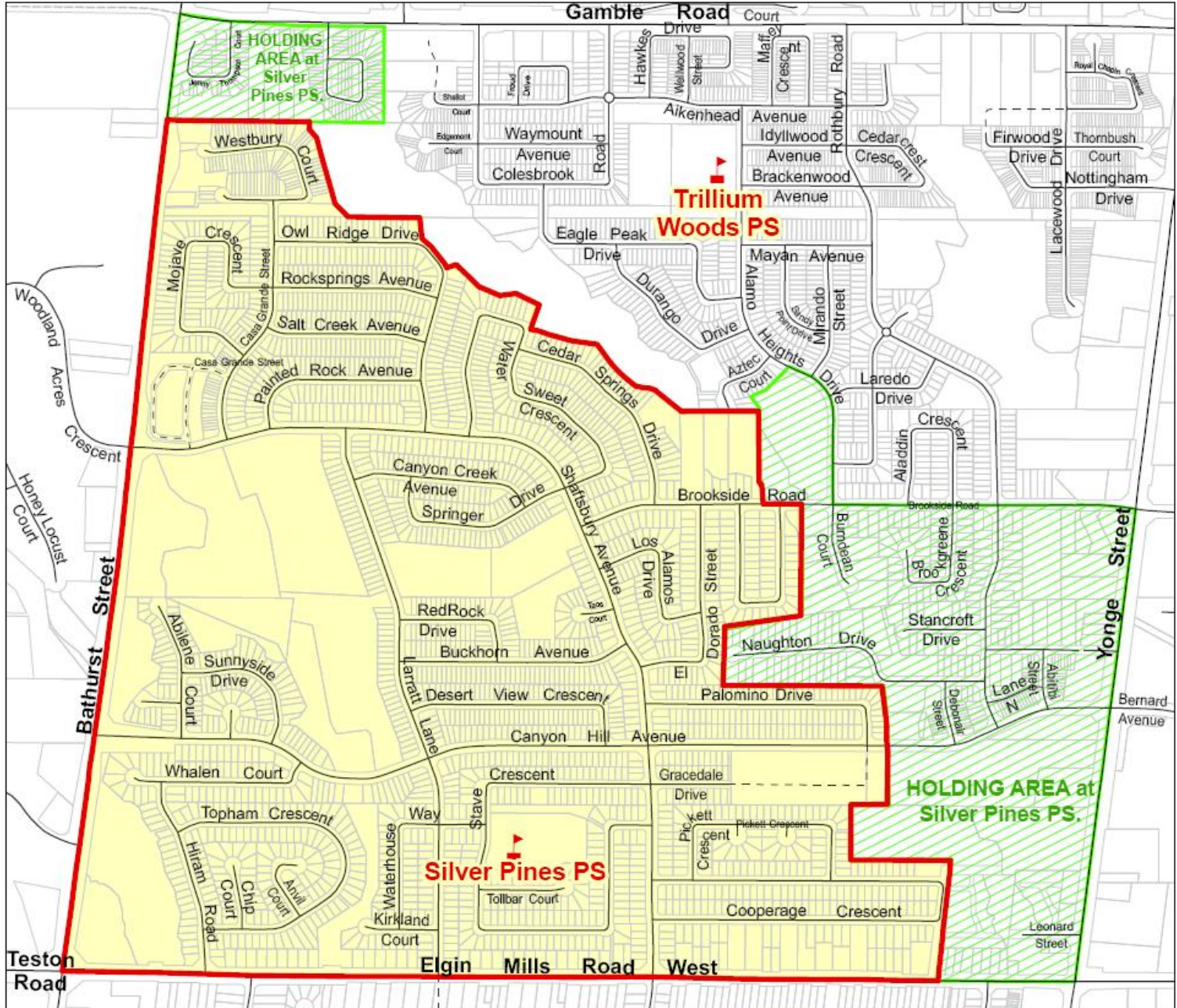


## Residential Development in Unnamed Oak Ridges East #1 ES Boundary

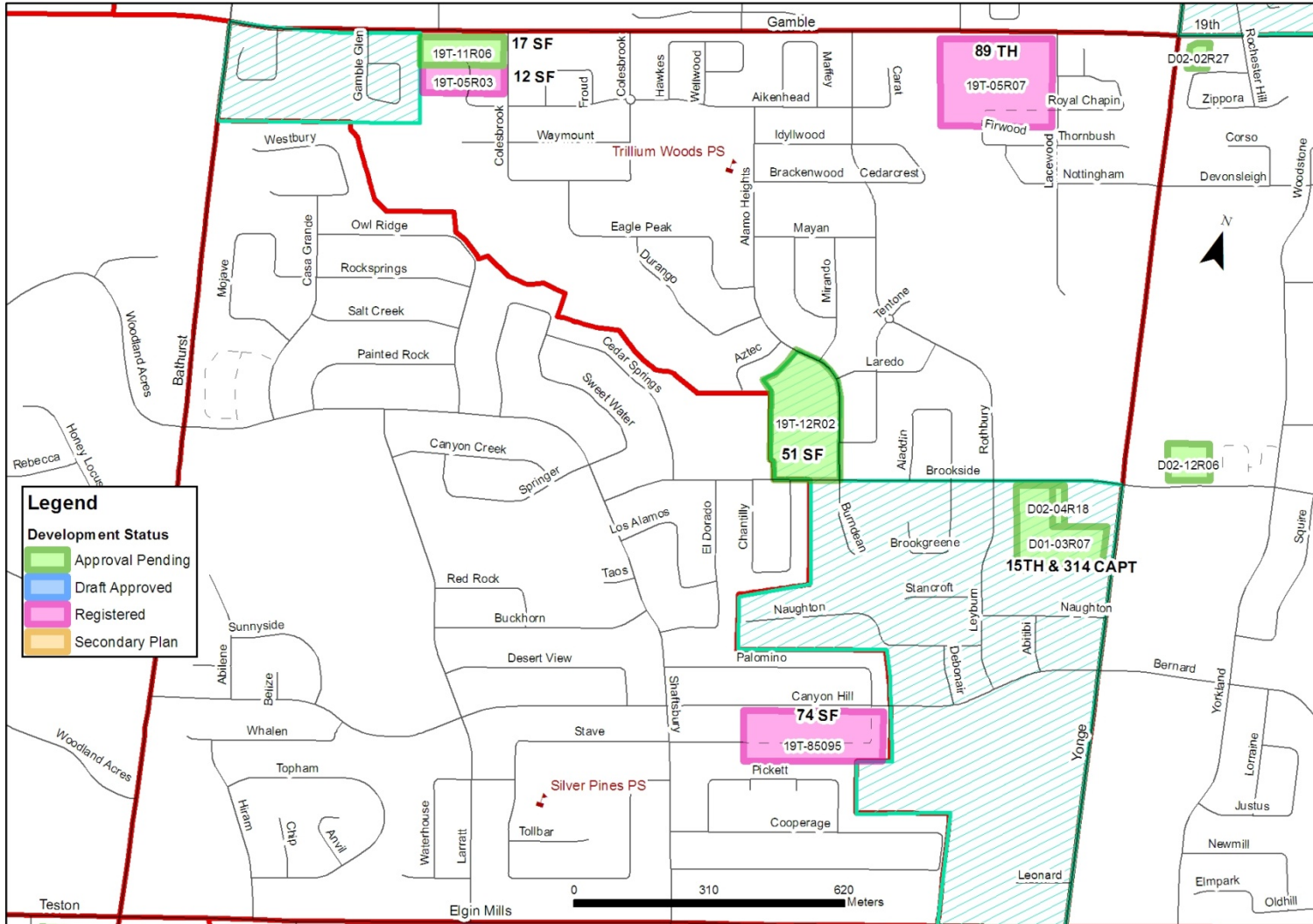
---

- Trillium Woods PS is the holding school for students from the Jefferson Forest (Unnamed Oak Ridges East #1 ES Site) area.
- Due to impending development within the Unnamed Oak Ridges East #1 boundary and enrolment pressure at Trillium Woods PS; a new holding area was established in the Unnamed Oak Ridges East #1 boundary in March 2012 to redirect students from new development to MacLeod's Landing PS

# Silver Pines PS, Town of Richmond Hill



# Development Remaining in Silver Pines PS and Trillium Woods PS boundaries





## Development in Silver Pines PS/Trillium Woods PS boundaries

---

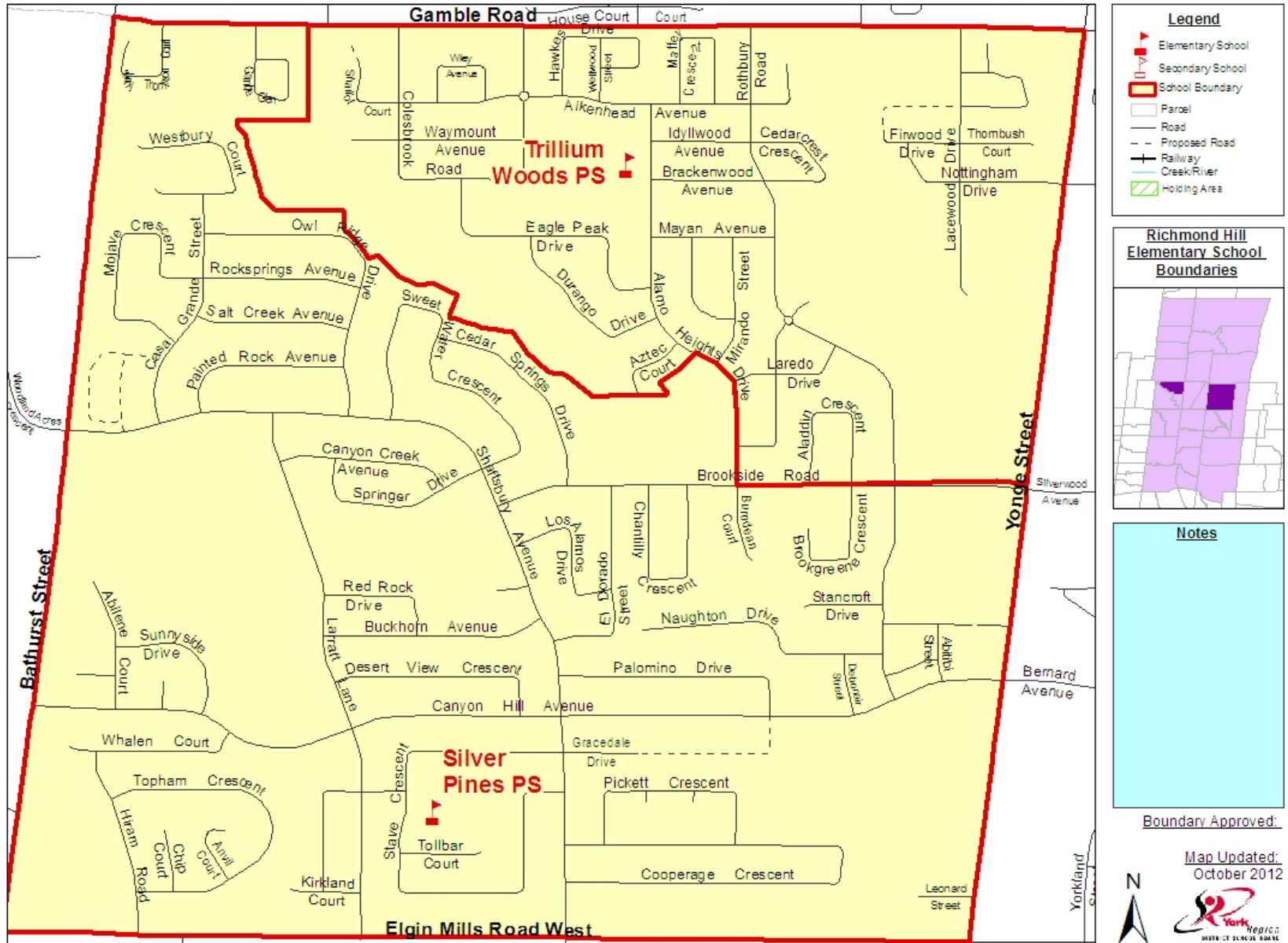
- Within the proposed Silver Pines PS boundary;
  - There are approximately 2,700 units built with majority of the units built before 1999
  - Approximately 140 low/medium density units remain to be built and a high density building with 314 proposed units (awaiting approval)
  - The community has gone through “peak yield” and enrolment is projected to decline
- In the proposed Trillium Woods PS boundary;
  - There are approximately 1,600 units built with majority of the units built after 2000
  - Approximately 120 units of low and medium density units remaining to be built
  - Is currently experiencing “peak yield” due to the younger age of the community compared to Silver Pines PS community

## Proposal

---

- The area within Trillium Woods PS that is holding at Silver Pines PS be attached permanently to Silver Pines PS boundary effective September 2013

## Proposed Trillium Woods PS - Section A and Silver Pines PS Boundaries



# Silver Pines PS and Trillium Woods PS Projections

**Proposed Silver Pines PS Projection**

Year	Total
2012	713
2013	623
2014	585
2015	554
2016	502
2017	480

Capacity : 717

**Proposed Trillium Woods PS Projection**

Year	Total
2012	659
2013	637
2014	607
2015	596
2016	566
2017	548

Capacity : 533 + 6P = 671

- There are currently 55 students in the proposed area to be attached to Silver Pines PS (43 at Trillium Woods PS and 12 at Silver Pines PS)
- Silver Pines PS and Trillium Woods PS projections assumes all students in affected area choose to attend Silver Pines PS starting in September 2013
- Silver Pines PS projection does not include overflow students from Herbert H. Carnegie PS or Trillium Woods PS in 2013+

## Implementation

---

- Students currently attending Trillium Woods PS and residing within the proposed boundary change area will be offered the option to remain at Trillium Woods PS until graduation
- Transportation will be provided according to the Board's Student Transportation Policy 680.0

## Process

---

October/

November 2012: Trillium Woods PS and Silver Pines PS  
School Council Meetings

November 29, 2012 Public Meeting at Silver Pines PS

February 2013: Take recommended boundary change to  
Program Planning Committee

March 2013: Take recommended boundary change to  
Board Standing and Board for final  
approval

September 2013 Implementation

Questions??

---