



Community Meeting

Mount Albert PS

February 27, 2013

Introductions

Loralea Carruthers

Chris Sarellas

Earl Liverance

Jane Ross

Sonja Meehan

Trustee

Superintendent of Schools

Principal, Mount Albert PS

Senior Manager, Planning

& Property Development

Services

Senior Planner

Meeting Purpose

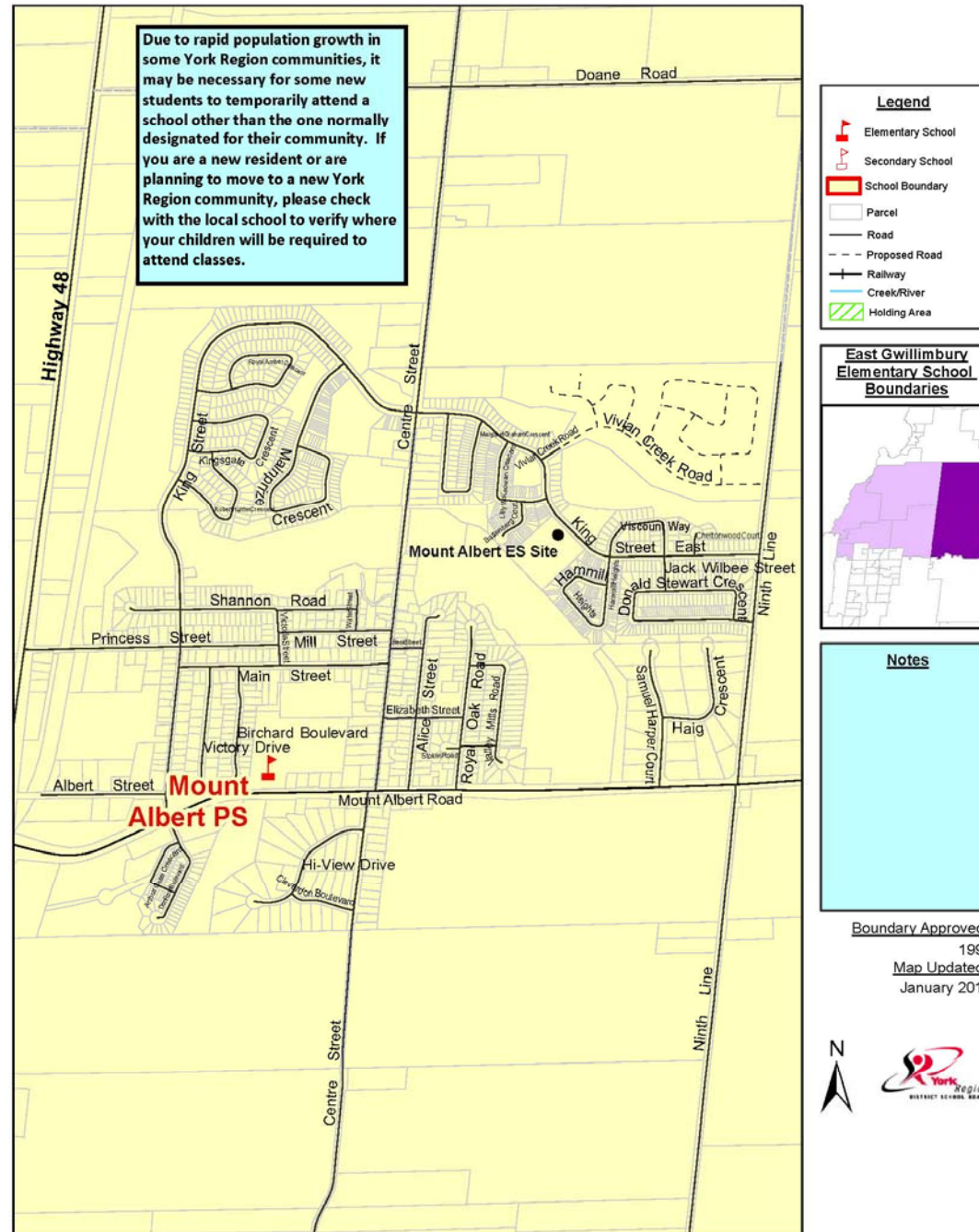
- Share with you the model for the new school coming to Mount Albert in September 2014
- Answer questions/receive feedback regarding the new school

Agenda

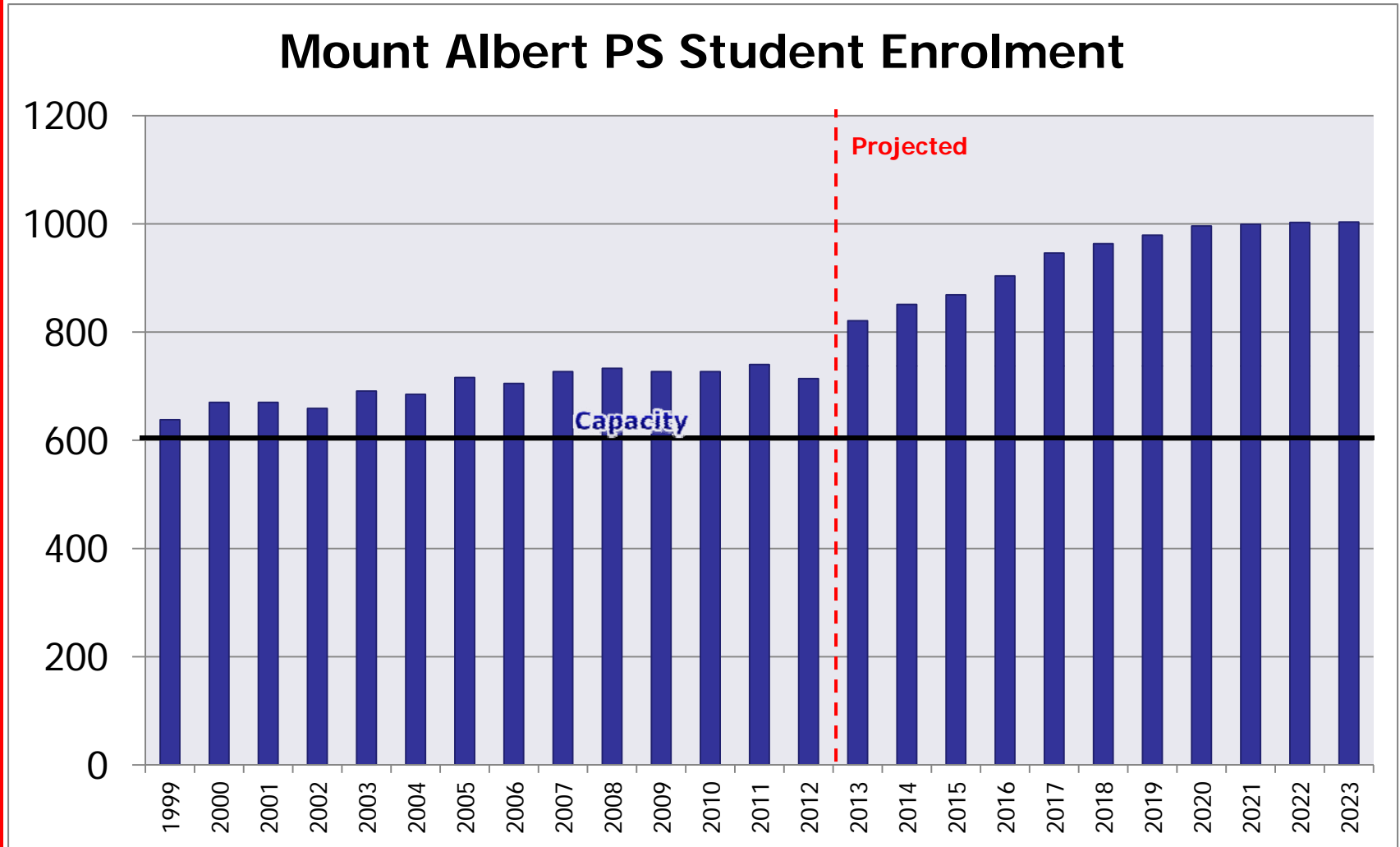
- Student Enrolment, Current & Projected for Mount Albert PS
- Mount Albert PS Property
- New School Request
- JK-3 and Grade 4-8 Model
- New School Status
- Next Steps: New School Meeting

York Region District School Board

Mount Albert PS Inset, Town of East Gwillimbury



York Region District School Board



Mount Albert PS

- Presently 700+ students, with additional growth
- 8 portables
- On site circulation issues for vehicles and pedestrians
 - Number of busses
 - Limited parking
 - Limited road frontage, sloped terrain
- Ability to accommodate Full Day Kindergarten in 2014 would require an addition

Option: Mount Albert PS Expansion

- Staff investigated the option to expand current school to accommodate Full Day Kindergarten and future growth
 - Extremely difficult to add classrooms with current building footprint
 - Potentially 1000 students on-site
 - Site circulation would worsen
 - Limited road frontage, sloped terrain, and position of building on property make it difficult to expand bus loop and parking
 - Concerns of ability to achieve municipal approvals due to extent of changes
 - Students potentially would have to be accommodated at other schools while construction in progress

York Region District School Board



Option: Reducing Enrolment at Mount Albert PS

- Grade 7 & 8 students attending another nearby school
- Approximate distance to nearby communities from Mount Albert PS
 - 17km to Newmarket
 - 12km to Ballantrae PS
 - 17km to Sharon

Option: New School Request

- YRDSB made a funding request to the Ministry of Education for a new school in Mount Albert
- Building two JK-8 schools would lead to excess school capacity for the community long term
- Ministry will not fund Board for empty pupil places
- The Ministry funded a smaller school to accommodate primary students and the Full Day Kindergarten program

JK-3 and Grade 4-8 Model

- The new school would accommodate JK-3 and Mount Albert PS Grades 4-8 beginning in September 2014
- New school to include Full Day Kindergarten program
- Remove portables from Mount Albert PS, no addition needed, on site circulation improves

JK-3 and Grade 4-8 Model

- Schools can be focused on grades offered through curriculum, events, productions
- Administration coordinate calendars for events, timing for parent teacher interviews
- Student transition planning for Grade 3's moving to Grade 4
- Staff will be hired at each school location in accordance with grade structure

Transportation

- Student transportation outlined in [Policy 680.0](#)
- Students are eligible for transportation if:
 - JK-3 students live >1.2km from school
 - Grade 4-8 students >1.6km from school
- Pick up/drop off can be at home, child care centre at school, or home daycare as long as the pick up/drop off point is:
 - Used consistently
 - Within the school boundary
 - Within the transportation zone

Eligibility for Grades 4-8 has been clarified from information shown in the presentation on the meeting date.

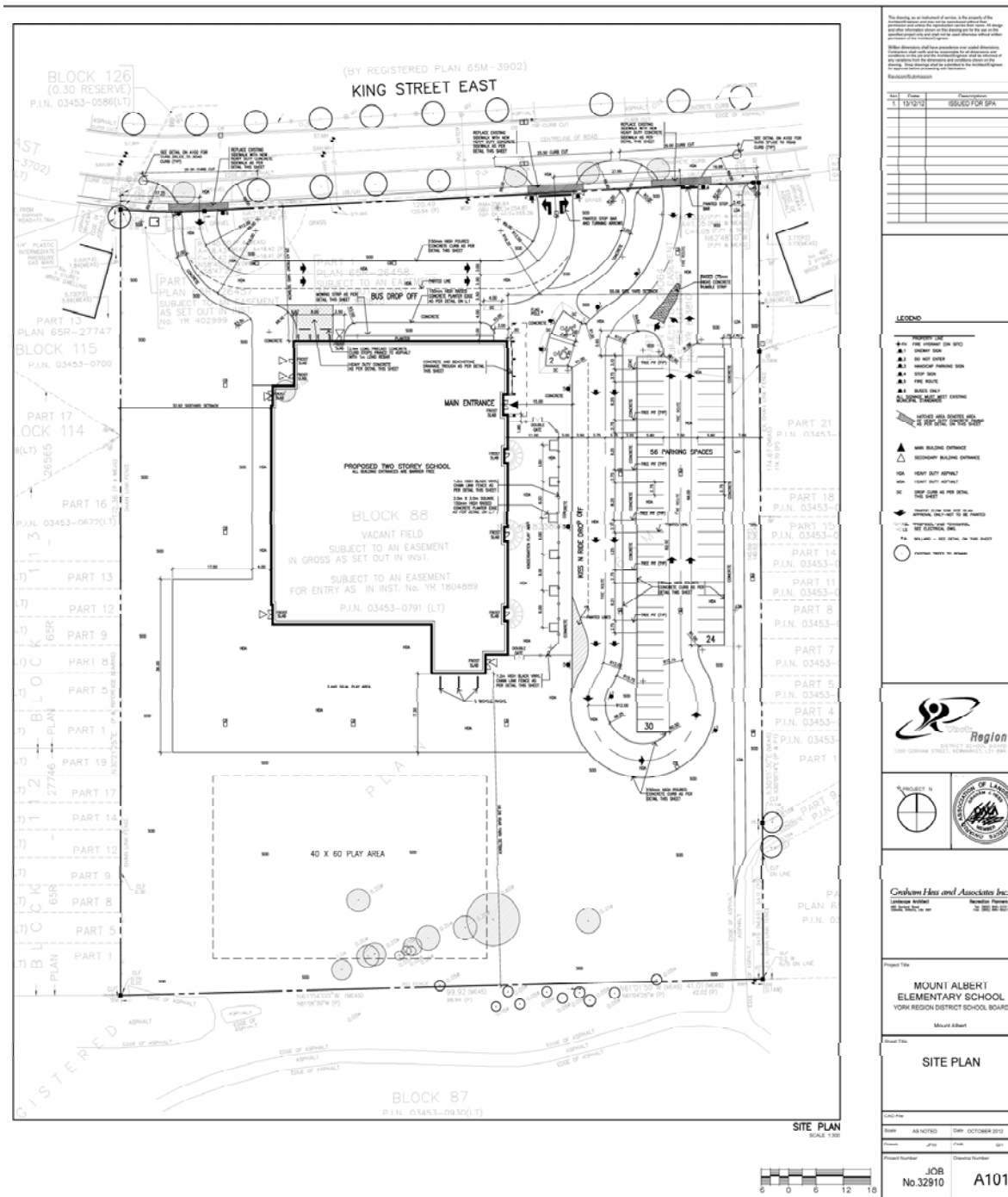
Before & After Care

- B&A at the new school needs at least 15 positive responses from parents
- Students from any grade can attend either B&A program
- Transportation provided if qualified

New School Construction

- Detail design is underway
- If all goes well with permits and approvals, construction should start in August 2013
- Proposed opening September 2014

York Region District School Board



DRAFT Proposed Site Plan

Next Steps: New School Meeting

- In Late Winter/Spring of 2014, YRDSB will host a new school meeting
 - Meet new school principal
 - Start and end times/Transportation
 - Registration
 - Kindergarten Program
 - Before and After School Programs
- Information on the meeting date will be communicated through a backpack letter and posted on the [New Schools](#) webpage

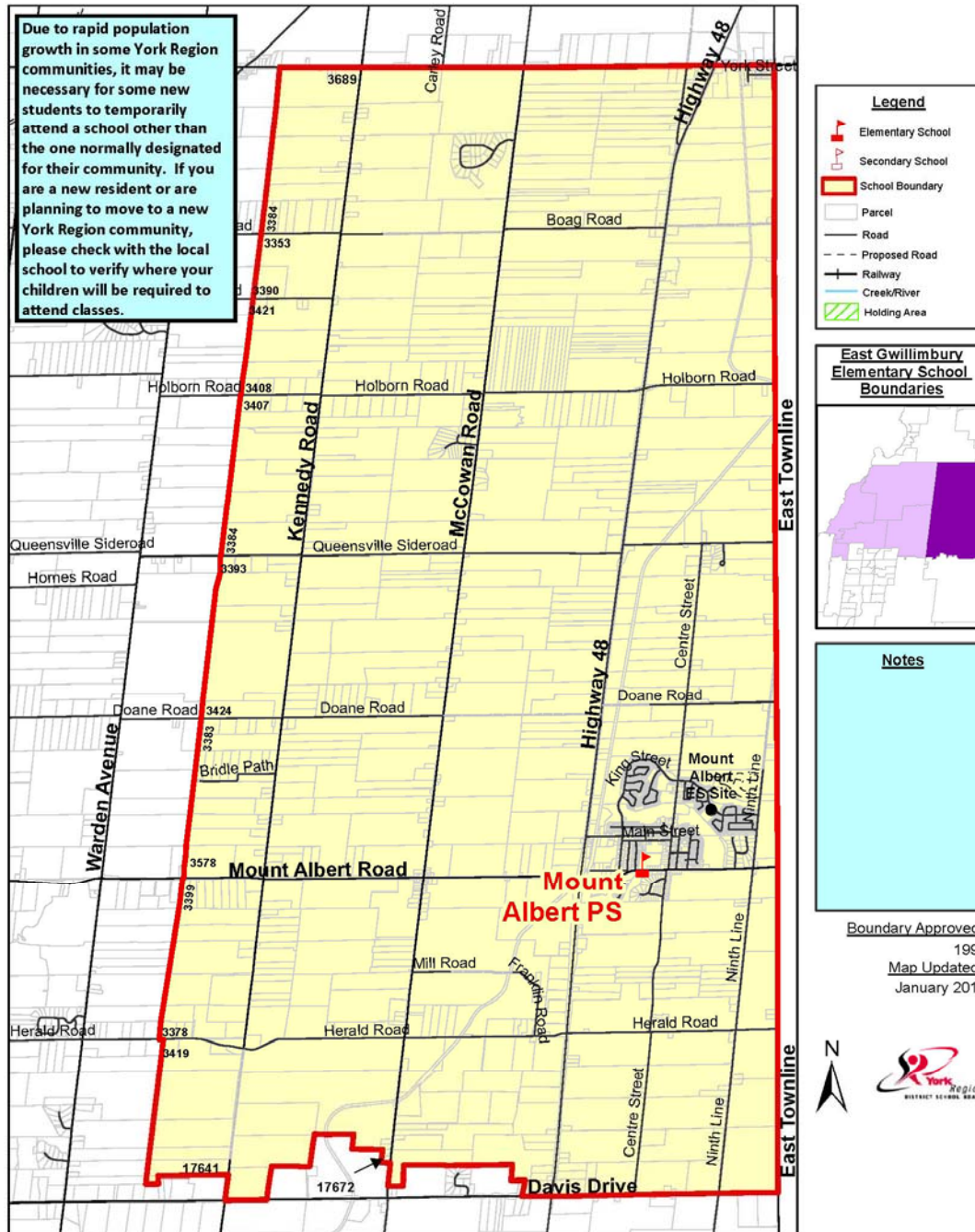
Questions?



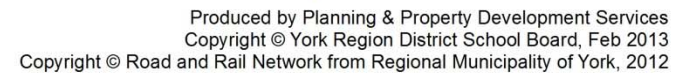
Supplemental Information

York Region District School Board

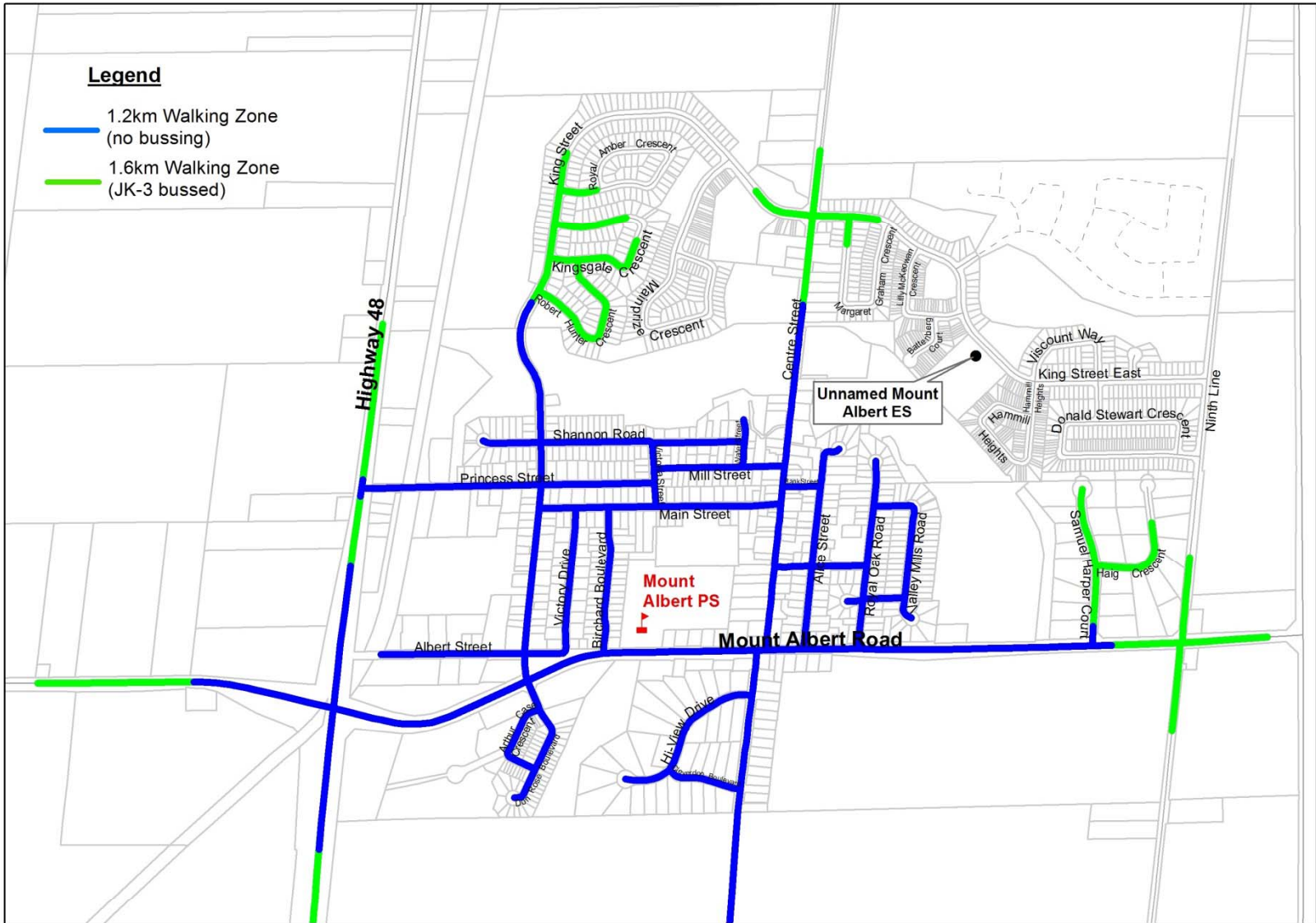
Mount Albert PS, Town of East Gwillimbury



Walking areas are based on a street network distance that does not include all factors that determine walking areas such as student safety and pedestrian walkways. The street network distance may not be 100% accurate.



DRAFT Mount Albert PS 1.2km and 1.6km Non-Transportation Zones



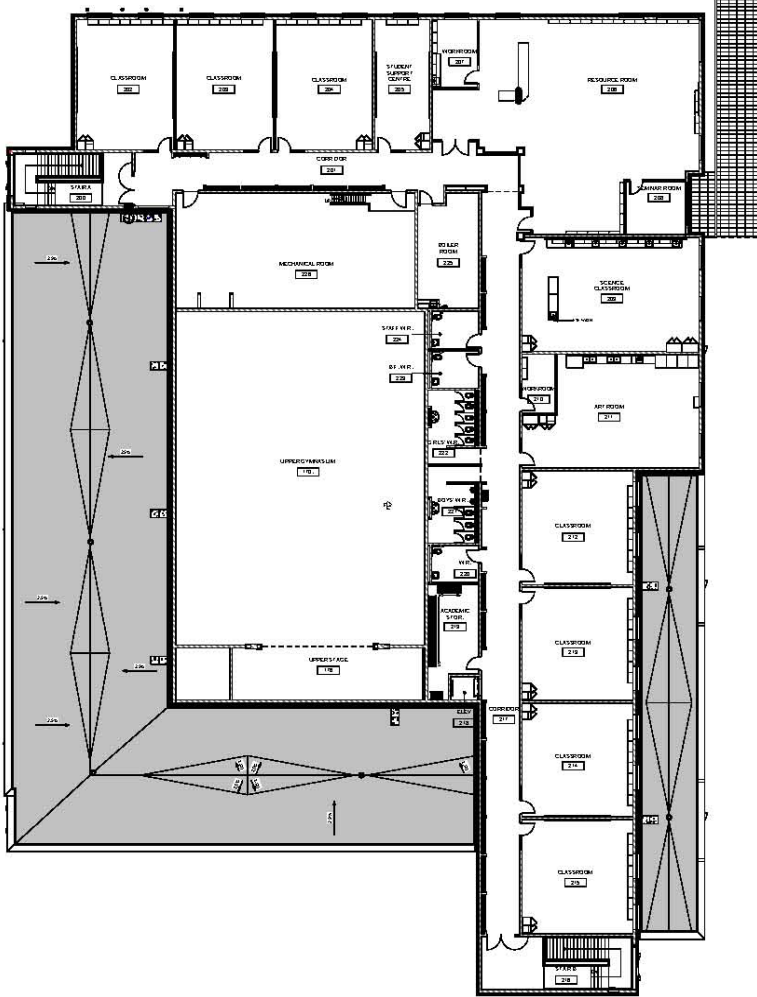
Walking areas are based on a street network distance that does not include all factors that determine walking areas such as student safety and pedestrian walkways. The street network distance may not be 100% accurate.

Produced by Planning & Property Development Services
Copyright © York Region District School Board, Feb 2013
Copyright © Road and Rail Network from Regional Municipality of York, 2012

[illegible]

12/23/2012 1:02:13 AM

York Region District School Board



The drawings are prepared by IBI Group Inc. for the use of the Client. The drawings are not to be used for any other purpose without the written consent of IBI Group Inc. The drawings are not to be used for any other purpose without the written consent of IBI Group Inc.

NO.	DATE	DESCRIPTION
1	2010-09-01	Issue for Review
2	2010-09-01	Issue for Review
3	2010-09-01	Issue for Review
4	2010-09-01	Issue for Review
5	2010-09-01	Issue for Review
6	2010-09-01	Issue for Review
7	2010-09-01	Issue for Review
8	2010-09-01	Issue for Review
9	2010-09-01	Issue for Review
10	2010-09-01	Issue for Review

IBI GROUP
 ARCHITECTS
 1000 SHEPPARD AVENUE EAST
 SUITE 100
 SCARBOROUGH, ONTARIO M1S 1T2
 TEL: (416) 291-1111
 FAX: (416) 291-1112
 WWW.IBIGROUP.COM

Project No.
 MOUNT ALBERT
 ELEMENTARY SCHOOL
 YORK REGION DISTRICT SCHOOL BOARD

Sheet No.
 SECOND FLOOR PLAN

Scale
 1" = 10'-0"

Date
 2010-09-01

Author
 C.M.

Check
 C.M.

Job No.
 No. 329/10

Sheet No.
 SPA-103

10/20/2010 11:28:29 AM