



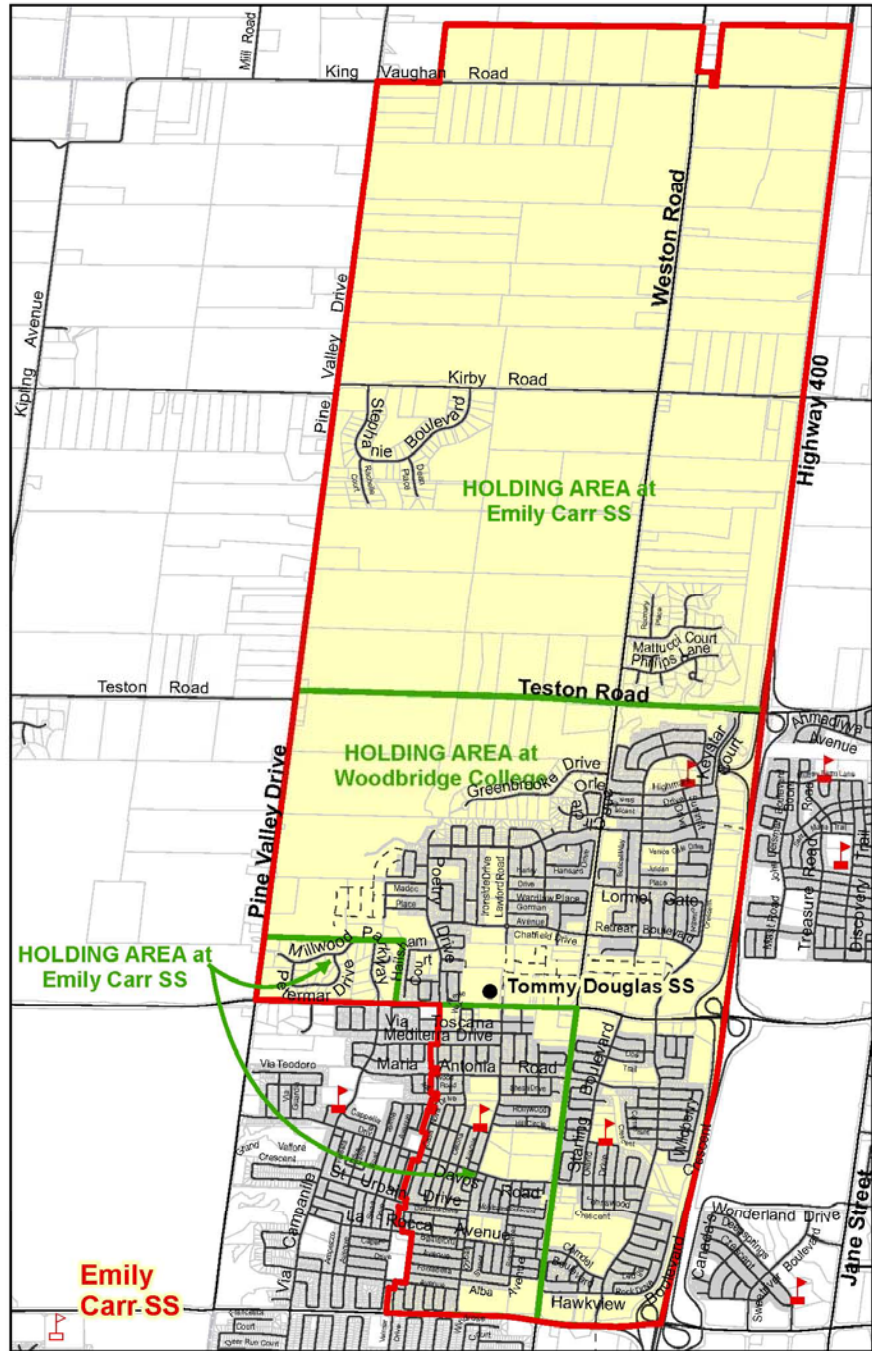
Tommy Douglas SS

**Pierre Berton PS
School Council**

May 27, 2013

York Region District School Board

Tommy Douglas SS, City of Vaughan



Legend

- Elementary School
- Secondary School
- School Boundary
- Parcel
- Road
- Proposed Road
- Railway
- Creek/River
- Holding Area

Vaughan Secondary School Boundaries

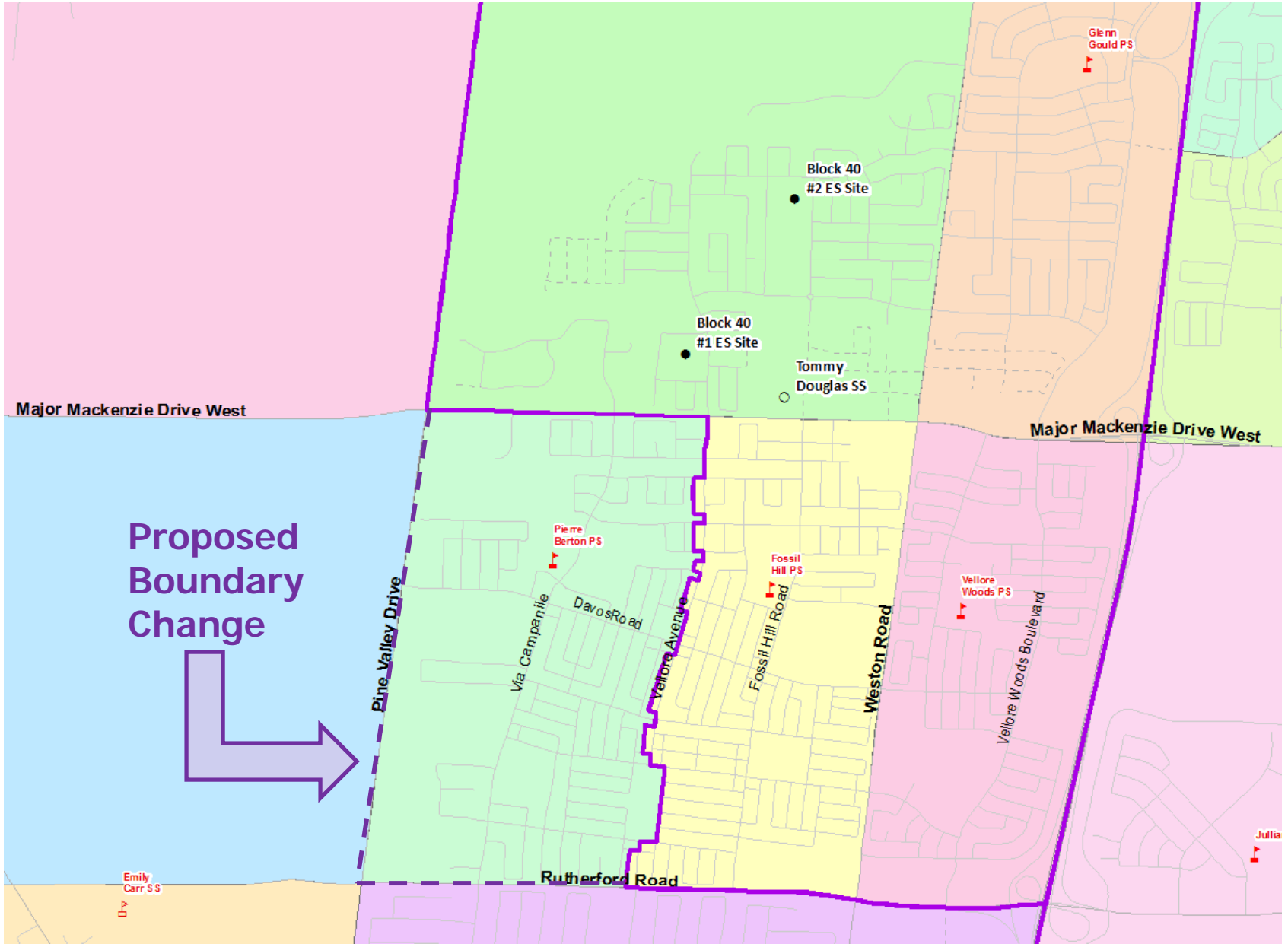
Notes

Students living in this boundary will be held at Emily Carr SS and Woodbridge College. See map for details.

Boundary Approved: 2002
 Map Updated: April 2013



York Region District School Board



Elementary Feeders for Tommy Douglas SS

- Fossil Hill PS
- Glenn Gould PS
- Vellore Woods PS
- New Block 40 ES (2015)
- Kleinburg PS (east of Pine Valley)
- Potential change to add Pierre Berton PS

Elementary Feeders for Emily Carr SS

- Blue Willow PS (north of Langstaff Rd)
- Kleinburg PS (west of Pine Valley)
- Lorna Jackson PS
- Pine Grove PS (north of Langstaff Rd)
- Woodbridge PS (north of Langstaff Rd)
- Future Nashville development (1-2 schools)

Projections

- Without boundary change

Tommy Douglas SS

Capacity = 1561

	Total	Utiliz.
2014	421	27%
2018	1191	76%

Emily Carr SS

Capacity = 1231

	Total	Utiliz.
2014	1253	102%
2018	1321	107%

- With boundary change

Tommy Douglas SS

Capacity = 1561

	Total	Utiliz.
2014	464	30%
2018	1464	94%

Emily Carr SS

Capacity = 1231

	Total	Utiliz.
2014	1210	98%
2018	1047	85%

Impact on Students

- Current Grade 7 (26 students)
 - 2013: Grade 8
 - 2014: Tommy Douglas SS for Grade 9
- Current Grade 8 (41 students)
 - 2013: Emily Carr SS
 - 2014: Choice to remain at Emily Carr SS or move to Tommy Douglas SS for Grade 10 due to boundary change

Recommendation and Next Steps

- That Pierre Berton PS be included as a feeder to Tommy Douglas SS effective September 2014 upon opening
- May 27: Pierre Berton PS School Council
- June 3: Information Meeting
- June: Present to Board
- Letter sent to all Pierre Berton PS students when approved