



Castlemore PS

School Council Meeting

March 6, 2014

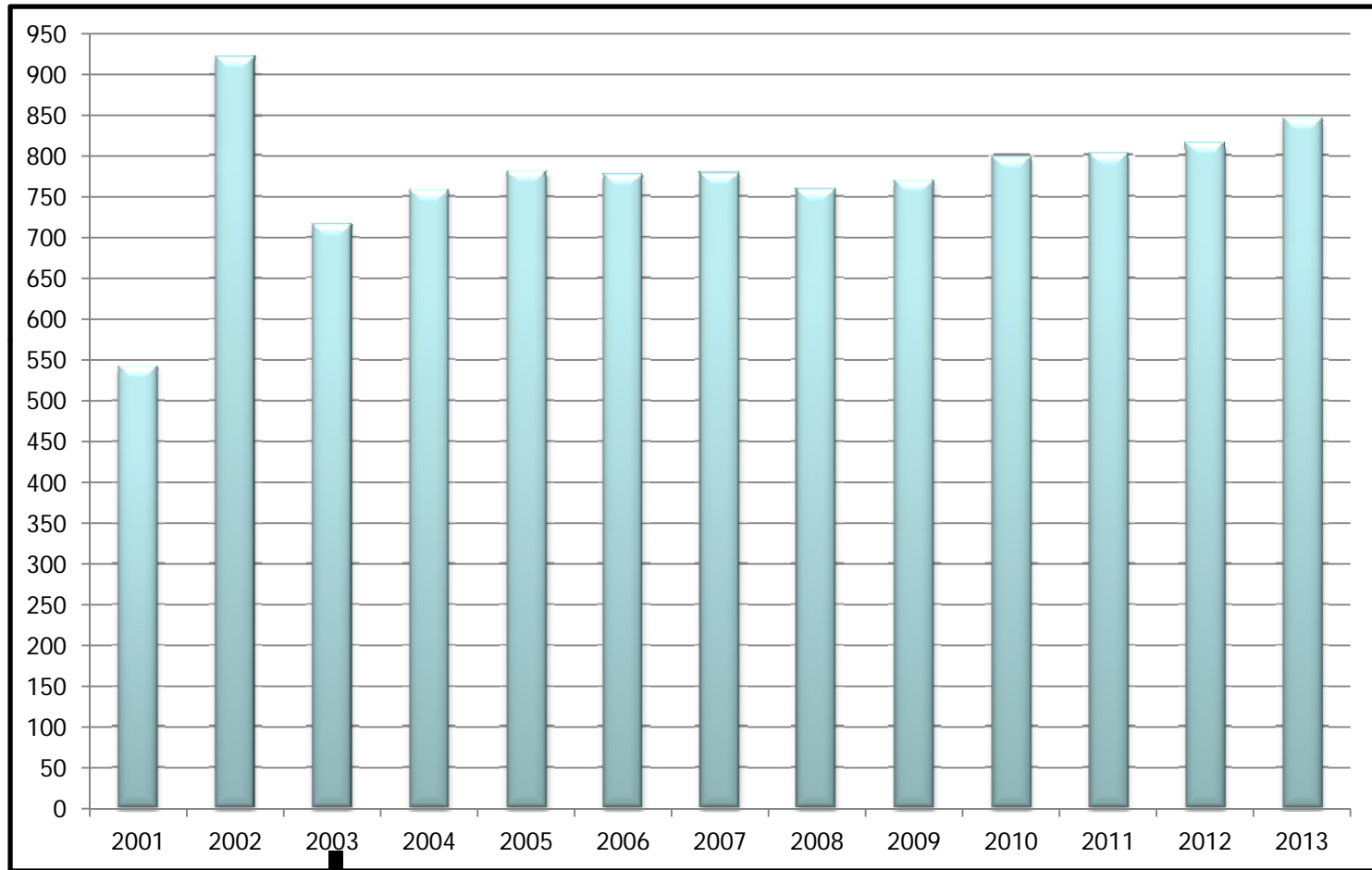
Welcome and Introductions

- Allan Tam – Trustee
- Rashmi Swarup – Superintendent of Schools
- Farooq Shabbar – Principal, Castlemore PS
- Heather Purcell - Vice Principal, Castlemore PS
- Dawn Adams – Manager of Accommodation Planning
- Sonia Sanita – Safe Routes to School Facilitator

Outline

- Historical Enrolment
- School Capacity
- Projected Enrolment and Student Yields
- Active & Safe Routes to School

Castlemore PS – Historical Enrolment



Stonebridge PS opens

School Capacity

Type	# Rooms	Ministry Rating	Total
Kindergarten	5	26	130
Classroom	23	23	529
Resource Room	5	12	60
Community Classroom	1	9	9
			728
Portables	5	23	115
			843

School Capacity Changes

- In 2004, Castlemore PS received an 8 classroom addition
- In 2013, the school implemented Full Day Kindergarten and added 2 kindergarten classrooms

Ontario Building Code

- Existing occupant loading for fire safety
 - Ground Floor 648
 - Second Floor 649
 - 1,297
- Existing occupant loading for washrooms
 - 1,254

2013-14 School Year

	Enrolment (Jan 31)	Capacity	Portables
Castlemore PS	832	728	5
Stonebridge PS	843	534	10
	1,675	1,262	15

- Beckett Farm PS opens in September 2014 with a capacity of 638

Division Comparison

	JK-EL	SK-EL	01	02	03	04	05	06	07	08	Total
Castlemore	67	73	70	92	92	78	65	64	102	103	806
Stonebridge	56	58	65	77	87	69	77	80	78	85	732

Projected in 5 and 10 Years

	2018 Projected Enrolment	Capacity	Portables
Castlemore PS	802	728	3
Stonebridge PS	592	612	-
Beckett Farm PS	682	638	2
	2,076	1,978	5

	2025 Projected Enrolment	Capacity	Portables
Castlemore PS	780	728	3
Stonebridge PS	487	612	-
Beckett Farm PS	769	638	6
	2,036	1,978	9

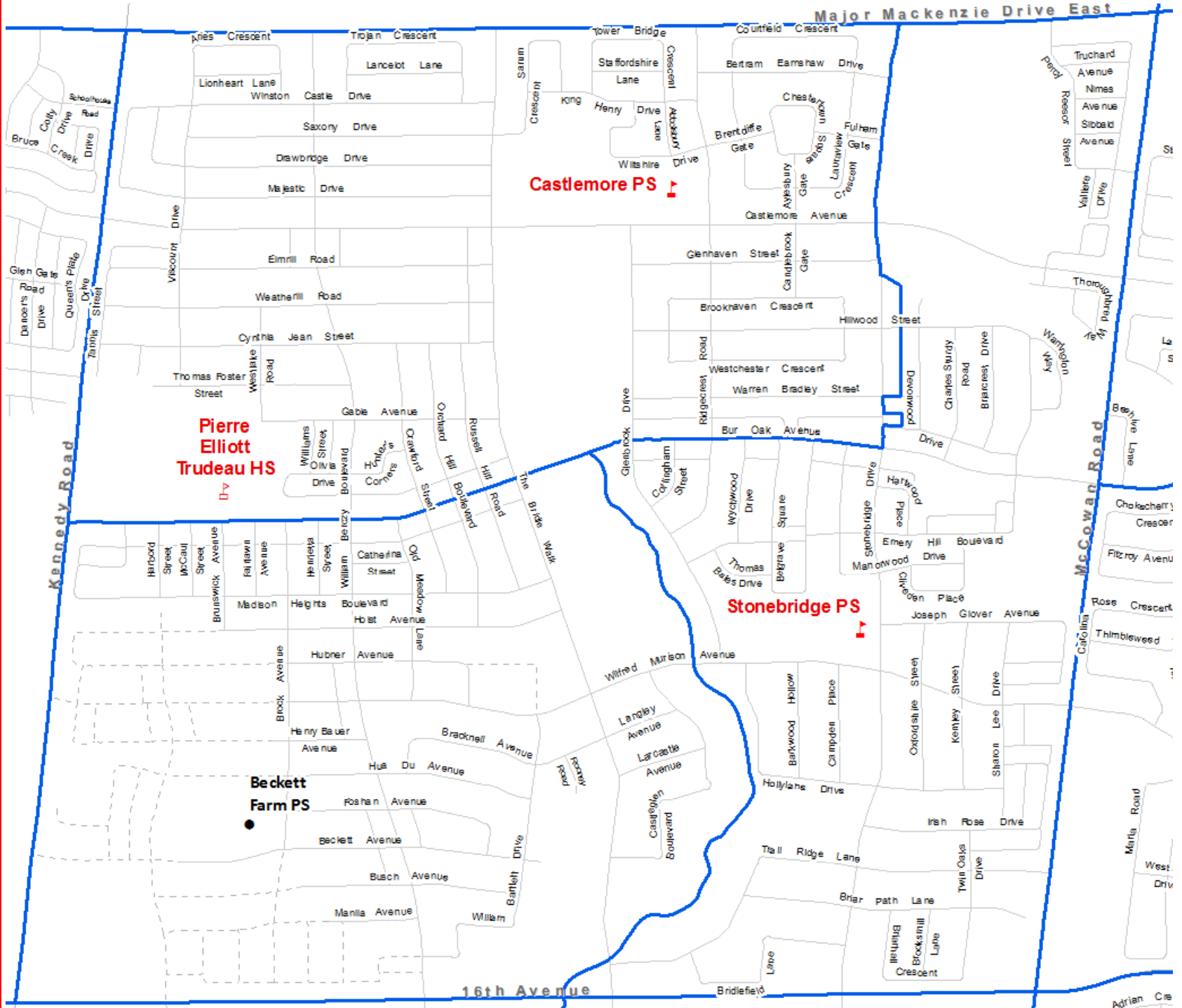
One Address, Multiple Last Names

- Planning staff track homes that have more than one distinct student last name with registration information
- Multiple last names can be due to a variety of factors:
 - Blending of families
 - Multi-unit home
- From 2010 to 2014, there has been an increase in homes with multiple student last names according to registration information from 2% to 4.5%

Future Projected Students

- Extension of Thomas Foster Street (~34 units) is remaining to be built
- A modification to the boundaries for Castlemore PS, Stonebridge PS, and Beckett Farm PS is a consideration to balance the 3 school's population

York Region District School Board



Parking

- City of Markham By-Law requires 39 spaces
- Existing parking is 57 spaces, including 2 handicap spaces

Update on the Active & Safe Routes to School at Castlemore PS



- **Active and Safe Routes to School (ASRTS):** is a program to promote and encourage active and sustainable transportation methods including walking, wheeling or taking the school bus (if eligible) for the trip to and from school.
- Promoting active travel to/from school is the most sustainable approach in dealing with school generated traffic.
- Provides an opportunity to get kids active and maintain a healthy lifestyle.
- The ASRTS program a collaborative project that involves numerous stakeholders to engage the school community:
 - School
 - York Region
 - York Regional Police
 - City of Markham
- Since March 2013, Castlemore PS has collaborated with the various stakeholders noted to implement an ASRTS program.

Program Highlights at Castlemore PS



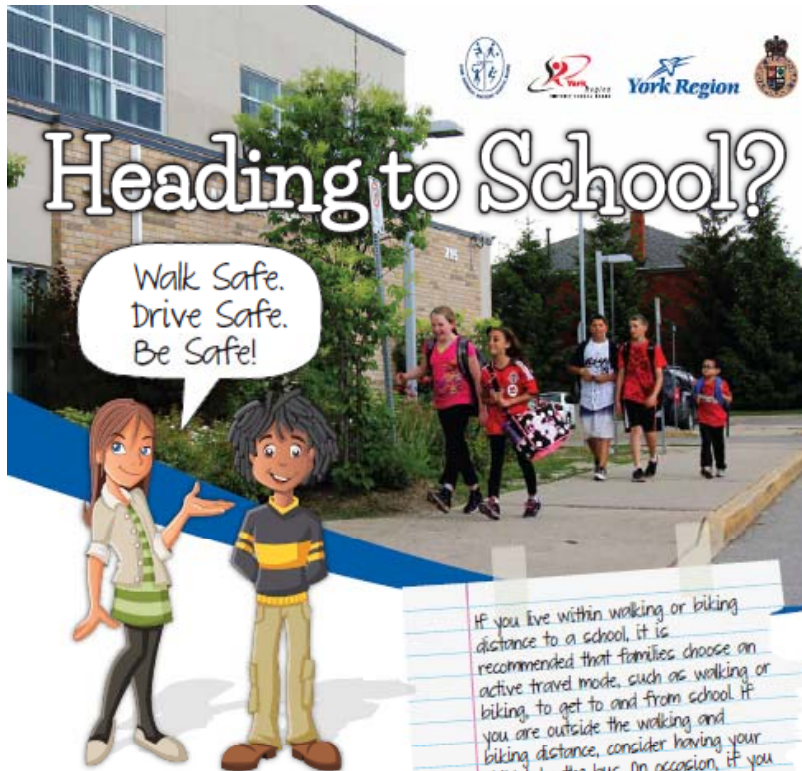
- Several meetings have been held to help address concerns related to traffic and driver behaviour.
 - School: Facilitated the implementation of an ASRTS program. School administration monitors the school kiss n' ride area and school staff monitors the parking lot area daily. School has distributed various communications to promote active travel and community safety. Several students have supported the program by creating and delivering presentations to the school about the various benefits of active transportation. Program launch event and assembly held in April 2013.
 - York Region: Public Health has been involved with planning assemblies and school events to encourage active and sustainable transportation to/from school. Support has been ongoing.
 - York Regional Police: Periodically monitors the school area and has issued warnings and tickets for driver infractions in the school area.
 - City of Markham: City of Markham has been made aware of specific concerns regarding safety in the school community and is working with the stakeholders on next steps.

Challenges and Next Steps

- Challenges 2013/2014:
 - The Weather. Numerous extreme cold weather alerts have made it unsafe to be outdoors for more than a few minutes.
 - Condition of Sidewalks. On many days this winter, snow and ice covered sidewalks have made it unsafe for walking.
 - Driver behavior is at the discretion of the drivers – numerous communications have been sent to help address this.
- Next Steps:
 - To continue working in collaboration with York Region, City of Markham and York Regional Police.
 - To continue sending communications home to families encouraging active and sustainable transportation for the trip to/from school and community safety messaging.
 - To work with our partners to plan more events to encourage active transportation for the spring.
 - To meet in early April with stakeholder group to discuss specific concerns.

Resources Distributed to Community

“Walk Safe, Drive Safe, Be Safe!” Brochure



How Can You Help Improve Traffic Conditions Around Schools?

An increasing number of schools throughout York Region are encouraging students and their families to use active travel to school, such as walking or biking instead of driving.

Active and Safe Routes to School programs promote increased physical activity, reduced traffic congestion, better air quality and great opportunities to get to know your community and neighbours better!

Physically active children are healthier, able to maintain a healthy body weight, stay focused and learn better at school.

If you live within walking or biking distance to a school, it is recommended that families choose an active travel mode, such as walking or biking, to get to and from school. If you are outside the walking and biking distance, consider having your child take the bus. On occasion, if you decide to drive, parents are encouraged to park legally close to school and walk the last block or two with their child.

Schools are areas with multiple distractions for both drivers and pedestrians. By driving children to school, drivers may be contributing to heavy traffic volumes and creating unfavourable conditions for pedestrians.

DRIVE Safe

The real penalty for not obeying traffic regulations is you may risk the safety of children!

BYLAWS AND FINES VARY BY MUNICIPALITY. CONTACT YOUR LOCAL MUNICIPALITY FOR MORE INFORMATION.

Signage commonly seen near York Region Schools

<p>COMMUNITY SAFETY ZONE FINES INCREASED</p> <p>Drivers must observe signage and watch for reduced speed limits. Fines may be doubled.</p>	<p>Supervised Crossing. Cross the street here. Obey the crossing guard.</p>	<p>No Parking allowed at the specified times.</p> <p>9 AM - 4 PM MON-FRI</p>	<p>School Zone - observe speed limit.</p> <p>MAXIMUM 40 km/h</p>
<p>FIRE ROUTE</p> <p>VEHICLES WILL BE TAGGED AND FOR TOWED AWAY</p> <p>No Parking in Fire Routes. These need to be clear for emergency vehicles. Fines range from \$100 to \$200.</p>	<p>No Stopping sign means no stopping at all the times specified; except to obey police or danger on the road.</p> <p>7 AM - 9 AM 3 PM - 7 PM MON-SAT</p>	<p>DO NOT PASS WHEN LIGHTS FLASHING</p> <p>Prepare to stop for a school bus at any time. Fines range from \$400 to \$2,000 with six demerit points for a first offence.</p>	

Drivers please be alert whenever driving in a school community. Here are some drive safe recommendations:

- Observe all road signage
- Follow posted speed limits; school zones usually have reduced speeds so drivers can safely stop to allow children to cross the street
- Avoid U-turns, backing up or making three point turns
- Watch for vehicles, pedestrians, bikes, scooters and stopped school buses
- Observe placement of crosswalks, traffic lights and road signage
- Seek out legal parking areas near school for days when you plan to park and walk a block.



Booster seats are required by law until your child is 4' 9", eight years old or 80 lbs.

ASRTS Program Information



There are numerous resources including newsletters for parents, teachers and students which can be found on the following website:

www.schoolbuscity.com/routes/

The following sites also provide information about ASRTS:

www.saferoutestoschool.ca

Questions